



Agenda for the
Allendale Charter Township Board Meeting
Monday, April 13, 2026, 6:00 p.m.

Members Present:

Members Absent:

Guests Present:

Meeting called to order

- Invocation given by Adam Elenbaas
- Pledge of Allegiance
- Approve Agenda
- Consent Agenda
 - Approval of the March 23, 2026, Regular Board Meeting Minutes
 - Bills
 - Interim Payments
- For information
 - 2025 Public Utility Department Year in Review
 - Ottawa County Sheriff's Office Monthly Report
- Public Hearings
- Public Comments
- Guest Speakers
- Action Items
 - Knollwood Mobile Home Title Transfer to BBR Mobile Home Setup
 - Resolution 2026-08: Water System Rate Schedule
 - Resolution 2026-09: Fee Schedule
 - Document Scanning Contract
 - Awarding of the Construction Contract for Pierce St Phase II Improvements
- Discussion Items
- Public Comments
- Board Comments
- Closed Session pursuant to Section 8(1)(c) of the Michigan Open Meetings Act, MCL 15.268(1)(c), to discuss the collective bargaining agreement currently being negotiated with the Utility Workers Union of America.
- Return to Open Session
- Potential Action Item: Union Contract Between Allendale Charter Township and the Utility Workers Union of America
- Adjournment

Our Wi-Fi connection may be used to access the Board Information Packet:

- Account: ACT_Guest Password: ACTguest
- Agenda and Packet file location: www.allendalemi.gov → Boards & Committees → Board of Trustees
→ Minutes & Agendas

**PROPOSED
PROCEEDINGS OF THE ALLENDALE
TOWNSHIP BOARD OF TRUSTEES
MARCH SESSION 2nd DAY**

The Allendale Township Board of Trustees met at the Allendale Township Auditorium, located at 6676 Lake Michigan Drive, on Monday, March 23, 2026, at 6:00 p.m. and was called to order at 6:00 p.m. by Mr. Elenbaas.

Present at Roll Call: Mr. MacDonald; Ms. Hansen; Mr. Zeinstra; Mr. Vander Wall; and Mr. Elenbaas. (5)

Absent at Roll Call: Mr. Smit; and Ms. Schuitema (2)

Staff and Guests Present: Kurt Van Koevering, Ottawa County Road Commission; Paul Ledford; and Michael Carey.

Ms. Hansen pronounced the invocation.

Mr. Elenbaas led in the Pledge of Allegiance to the Flag of the United States of America.

BOT 26-045 Mr. Zeinstra with support from Mr. MacDonald moved to approve the agenda of today as presented. The motion passed.

BOT 26-046 Mr. MacDonald with support from Mr. Vander Wall moved to approve the following Consent Resolutions:

1. To approve the Minutes of the March 9, 2026, Board of Trustees meeting as presented.
2. To approve and authorize the Clerk and/or Supervisor to sign Resolution 2026-06: Committee Appointment- Library Advisory Board: a resolution approving the following committee appointments:

Library Advisory Board – Partial Term of a 3 year Term

Aubree Carlisle, Term Ending 12/31/2026

3. To approve the general claims in the amount of \$454,075.62 and interim payments of \$230,227.81, as presented by the summary report for March 23, 2026.

The motion passed.

Items Received for Information

1. February 16, 2026, Planning Commission meeting minutes.
2. March 2, 2026, Planning Commission meeting cancelled.

Public Hearings- None

Public Comments

Comments were received from:

1. Paul Ledford, Hudsonville, MI
2. Kurt Van Koevering, Ottawa County Road Commission

BOT 26-047 Mr. Elenbaas with support from Mr. Zeinstra moved to close public comment.
The motion passed.

Guest Speakers- None

Action Items

BOT 26-048 Mr. Vander Wall with support from Mr. MacDonald moved to approve and authorize the Clerk and/or Supervisor to sign Ordinance 2026-04 as amended by removing “owner/resident” and replacing it with “owner” from section 470.23.25 (L): Zoning Text Amendments; an ordinance that will amend Section 3.11.B1d – Accessory Uses and Buildings to revise the setback requirement for accessory buildings within the Agricultural and Rural Zoning District to meet that for principal buildings; will amend Section 3.11.B2 – Accessory Uses and Buildings to eliminate its content and reserve for future use; will amend Section 3.11.B3a – Accessory Uses and Buildings to correct “principle” to “principal;” will add Section 3.11.C1l – Accessory Uses and Buildings to include Accessory Dwelling Unit; will amend Section 12.08B2a – Procedures to correct a section reference; will amend Section 12.08B2b – Procedures to correct a section reference; will add Section 23.24 – Short Term Rentals to allow Short Term Rentals in Agricultural and Residential Zoning Districts, define terms such as occupant, owner, and responsible local agent, establish application requirements, limit the number of Short Term Rentals in the Township to fifty, require a permit, written evidence of health department approval, renewal requirements, and conditions, create performance standards such as parking, a limit of one principal dwelling per lot, maximum occupants, means of trash removal, campfire controls, noise limitations, prohibition of trespass, prohibition of nuisance, expiration and reapplication, violations, suspension,

revocation, and means for appeal; will add Section 23.25 – Accessory Dwelling Units to allow Accessory Dwelling Units as an accessory to a single-family dwelling and establish minimum requirements such as its location, number, residence of the property owner, configuration, setbacks, code compliance, approval of water and wastewater service from the health department, building appearance, maximum area, and prohibition of structures as an Accessory Dwelling Unit or uses of the Accessory Dwelling Unit.; will amend Section 32.02 – Definitions (A) to provide for the definition of Accessory Dwelling Unit and; will amend Section 32.20 – Definitions (S) to provide for the definition of Short Term Rental, of the Allendale Charter Township Zoning Ordinance. The motion passed.

BOT 26-049 Mr. Vander Wall with support from Mr. MacDonald moved to approve and authorize the Clerk and/or Supervisor to sign Resolution 2026-07: Opposition to House Bill; a resolution expressing opposition to the passage of House Bills 5529 through 5531, and 5581 through 5584 of 2026, due to the significant limitations these bills would place on local zoning authority and local decision-making as provided under the Michigan Zoning Enabling Act. The motion passed.

BOT 26-050 Mr. Zeinstra with support from Mr. MacDonald moved to approve and authorize the Clerk and/or Supervisor to execute all necessary documents to distribute \$312.00 from the Allendale Charter Township Veteran’s Memorial Fund, held by the Grand Haven Community Foundation, for 2026 Veterans Day activities hosted by the township. The motion passed.

Discussion Items

Mr. Elenbaas requested feedback on proposed language for a potential street parking ordinance. The Board recommended identifying specific areas to address parking concerns.

Mr. Elenbaas also sought direction on Town Center planning and next steps, noting that GVSU will present conceptual ideas at an upcoming meeting.

Several board members had questions and comments.

Public Comments- None

BOT 26-051 Mr. Elenbaas with support from Mr. Vander Wall moved to close public comment. The motion passed.

Board Comments

Mr. Elenbaas informed the Board that a quote for the scanning project is forthcoming, noting that due to the specialized nature of the work and limited vendors, only one proposal may be presented.

Ms. Hansen reminded the Board that Allendale Township will not have a May election this year.

BOT 26-052 Ms. Hansen, with support from Mr. Zeinstra moved to adjourn the meeting at 7:13 p.m. The motion passed.

Jody L. Hansen, Clerk
Of the Township of Allendale

Adam Elenbaas, Supervisor
Of the Township of Allendale

User: DENISE
DB: ALLENDALE

INVOICE ENTRY DATES 04/01/2026 - 04/14/2026

BOTH JOURNALIZED AND UNJOURNALIZED

BOTH OPEN AND PAID

GL Number	GL Desc	Vendor	Invoice Description	Amount	Check #
Fund 101 General Fund					
Dept 000.000 REVENUE					
101-000.000-222.000	Due To County	OTTAWA COUNTY TREASURER	MOBILE HOMES TAX - MARCH	256.50	
101-000.000-222.000	Due To County	OTTAWA COUNTY TREASURER	DOG LICENSES - MARCH	201.00	
101-000.000-225.000	Due To Schools	OTTAWA COUNTY TREASURER	MOBILE HOMES TAX - MARCH	1,026.00	
101-000.000-228.000	DUE TO STATE OF MICHIGAN	STATE OF MICHIGAN	QUALIFIED HEAVY EQUIPMENT RENTAL PERS	11,773.51	
101-000.000-231.000	DEFERRED COMP PAYABLE	EMPOWER	FEB EFT PAYMENT	1,365.87	32726
101-000.000-231.010	401A PAYABLE	EMPOWER	FEB EFT PAYMENT	13,160.25	32726
101-000.000-231.020	401A LOAN PAYABLE	EMPOWER	FEB EFT PAYMENT	129.99	32726
101-000.000-231.030	Misc Ins - Aflac	AFLAC	MISCELLANEOUS INSURANCE - MARCH	285.50	
101-000.000-266.000	WAGE GARNISHMENT PAYABLE	MICHIGAN STATE DISBURSEM	CHILD SUPPORT DISBURSEMENT	2.07	
101-000.000-284.259	SPRINGFIELD NORTH 2	FLEIS & VANDENBRINK ENG'	SITE PLAN REVIEW - SPRINGFIELD NORTH	162.50	
101-000.000-284.259	SPRINGFIELD NORTH 2	FRESH COAST PLANNING LLC	PLANNING SERVICES - MARCH	196.00	
101-000.000-284.271	MIEDEMA METAL BUILDING	FLEIS & VANDENBRINK ENG'	SITE PLAN REVIEW - MIEDEMA METAL BUIL	1,507.50	
101-000.000-284.271	MIEDEMA METAL BUILDING	FRESH COAST PLANNING LLC	PLANNING SERVICES - MARCH	630.00	
101-000.000-284.272	WESCO 48TH AVE	FLEIS & VANDENBRINK ENG'	SITE PLAN REVIEW - WESCO 48TH AVENUE	1,453.50	
101-000.000-284.272	WESCO 48TH AVE	FRESH COAST PLANNING LLC	PLANNING SERVICES - MARCH	322.00	
101-000.000-284.273	DEWPOINT WEST 5	FLEIS & VANDENBRINK ENG'	SITE PLAN REVIEW - DEWPOINT WEST 5	500.00	
101-000.000-284.273	DEWPOINT WEST 5	FRESH COAST PLANNING LLC	PLANNING SERVICES - MARCH	196.00	
Total For Dept 000.000 REVENUE				33,168.19	
Dept 101.000 Township Board					
101-101.000-900.000	PRINTING, PUBLISHING, & POSTAGE	MLIVE MEDIA GROUP	GR PRESS DISPLAY ADS - MARCH	1,346.44	
Total For Dept 101.000 Township Board				1,346.44	
Dept 171.000 Supervisor					
101-171.000-732.000	SUPPLIES	VC3 INC	NEW LAPTOP	1,639.00	
101-171.000-802.000-CELLPH	Contracted Services	VERIZON WIRELESS	CELL PHONE CHARGES - MARCH	40.72	
Total For Dept 171.000 Supervisor				1,679.72	
Dept 209.000 EMPLOYEE INSURANCES					
101-209.000-718.000	DISABILITY INS	MUTUAL OF OMAHA INSURANC	DISABILITY INSURANCE - APRIL	527.17	
Total For Dept 209.000 EMPLOYEE INSURANCES				527.17	
Dept 215.000 CLERK					
101-215.000-802.000-CELLPH	Contracted Services	VERIZON WIRELESS	CELL PHONE CHARGES - MARCH	81.44	
101-215.000-807.000	COMMUNITY PROGRAMS	AMAZON CAPITAL SERVICES	FRAMES FOR PASSPORT FEES	45.98	
101-215.000-860.000	MILEAGE	JODY HANSEN	MILEAGE REIMBURSEMENT - MARCH	294.50	
Total For Dept 215.000 CLERK				421.92	
Dept 223.000 AUDIT					
101-223.000-810.000	AUDIT	VREDEVELD HAEFNER LLC	FINANCIAL STATEMENTS AUDIT - 2025	5,120.00	
Total For Dept 223.000 AUDIT				5,120.00	
Dept 248.000 ADMINISTRATION					
101-248.000-732.000	SUPPLIES	AMAZON CAPITAL SERVICES	BINDER DIVIDERS	15.18	
101-248.000-732.000	SUPPLIES	AMAZON CAPITAL SERVICES	FILE FOLDERS	28.78	
101-248.000-732.000	SUPPLIES	PITNEY BOWES INC	RED INK CARTRIDGES - POSTAGE MACHINE	265.58	
101-248.000-732.000-PASSPO	SUPPLIES	AMAZON CAPITAL SERVICES	PASSPORT SUPPLIES	130.31	
101-248.000-900.000	PRINTING, PUBLISHING, & POSTAGE	KCI (KENT COMMUNICATIONS	MAIL PICKUP FEE - JAN; FEB; & MAR	135.00	
101-248.000-900.000	PRINTING, PUBLISHING, & POSTAGE	PITNEY BOWES BANK INC PU	POSTAGE MACHINE REFILL	1,133.35	
101-248.000-955.000	Miscellaneous	MICHIGAN SECRETARY OF ST	NOTARY - HANSEN	10.00	
101-248.000-955.000	Miscellaneous	MICHIGAN SECRETARY OF ST	NOTARY - SZYMANSKI	10.00	
101-248.000-955.000	Miscellaneous	OTTAWA COUNTY CLERK	NOTARY - HANSEN	10.00	
101-248.000-955.000	Miscellaneous	OTTAWA COUNTY CLERK	NOTARY - SZYMANSKI	10.00	

User: DENISE

INVOICE ENTRY DATES 04/01/2026 - 04/14/2026

DB: ALLENDALE

BOTH JOURNALIZED AND UNJOURNALIZED

BOTH OPEN AND PAID

GL Number	GL Desc	Vendor	Invoice Description	Amount	Check #
Fund 101 General Fund					
Dept 248.000 ADMINISTRATION					
Total For Dept 248.000 ADMINISTRATION				1,748.20	
Dept 257.000 ASSESSOR					
101-257.000-721.000-DUESXX	PROFESSIONAL DEVELOPMENT	MID MI ASSN OF ASSESSING	2026 MEMBERSHIP DUES - GENTER	25.00	
101-257.000-802.000	Contracted Services	APEX SOFTWARE	ANNUAL SOFTWARE MAINTENANCE RENEWAL	780.00	
Total For Dept 257.000 ASSESSOR				805.00	
Dept 262.000 ELECTIONS					
101-262.000-860.000	MILEAGE	JODY HANSEN	MILEAGE REIMBURSEMENT - MARCH	294.49	
101-262.000-900.000	PRINTING, PUBLISHING, & POSTAGE	KCI (KENT COMMUNICATIONS)	VOTER ID CARDS - MARCH	193.43	
101-262.000-955.000	Miscellaneous	AMAZON CAPITAL SERVICES	SECURITY CAMERAS	103.99	
101-262.000-955.000	Miscellaneous	AMAZON CAPITAL SERVICES	SHELVING STORAGE RACKS	89.08	
101-262.000-955.000	Miscellaneous	AMAZON CAPITAL SERVICES	STORAGE CONTAINERS/BINS	55.18	
Total For Dept 262.000 ELECTIONS				736.17	
Dept 265.000 BUILDING & GROUNDS					
101-265.000-802.000-CELLPH	Contracted Services	VERIZON WIRELESS	MIRAKI MODEM & CELL PHONE CHARGES - M	12.08	
101-265.000-802.000-CELLPH	Contracted Services	VERIZON WIRELESS	CELL PHONE CHARGES - MARCH	40.72	
101-265.000-802.000-TELEPH	Contracted Services	ACENTEK	TELEPHONE CHARGES - APRIL	919.26	
101-265.000-863.000	FUEL	WEX BANK-EXXON MOBIL	FUEL CHARGES	365.28	
101-265.000-926.000-ELECTR	UTILITIES	CONSUMERS ENERGY	ELECTRIC USAGE - APRIL	1,049.11	
101-265.000-930.000	Maintenance	ALLENDALE ACE HOME CENTE	MAINTENANCE SUPPLIES - TWP HALL	39.46	
101-265.000-930.000	Maintenance	AMAZON CAPITAL SERVICES	TIRES	82.99	
101-265.000-930.000	Maintenance	AMAZON CAPITAL SERVICES	AXLE & WHEEL BEARING & SEALS KIT	145.99	
101-265.000-930.000	Maintenance	FAMILY FARM & HOME INC	MAINTENANCE SUPPLIES	74.96	
101-265.000-930.000	Maintenance	GFL ENVIRONMENTAL SERVIC	JETTER @ TWP HALL	712.50	
101-265.000-930.000	Maintenance	MENARDS-HOLLAND INC	MAINTENANCE SUPPLIES	96.59	
101-265.000-930.000	Maintenance	MENARDS-HOLLAND INC	MAINTENANCE SUPPLIES	221.95	
101-265.000-955.000	Miscellaneous	KUSTOM DEZINS LLC	COATS/VEST WITH TOWNSHIP LOGO	235.00	
Total For Dept 265.000 BUILDING & GROUNDS				3,995.89	
Dept 336.000 FIRE DEPT					
101-336.000-732.000	SUPPLIES	ALLENDALE ACE HOME CENTE	MAINTENANCE SUPPLIES - TWP HALL	54.18	
101-336.000-732.000	SUPPLIES	AMAZON CAPITAL SERVICES	SCREEN PROTECTOR	18.79	
101-336.000-732.000	SUPPLIES	AMAZON CAPITAL SERVICES	WIRELESS MOUSE & STYLUS PEN	61.98	
101-336.000-732.000	SUPPLIES	AXES & IRONS	LEATHER FIRE BOOTS	537.97	
101-336.000-802.000	Contracted Services	AT&T MOBILITY	FIRSTNET MOBILE UNIT IPADS	77.46	
101-336.000-802.000	Contracted Services	IMAGE TREND INC	ELITE RESCUE - ANNUAL FEE	2,141.07	
101-336.000-802.000	Contracted Services	NYE UNIFORM COMPANY	HI GLOSS SHOE	69.50	
101-336.000-802.000	Contracted Services	NYE UNIFORM COMPANY	NAMEBAR	38.00	
101-336.000-802.000	Contracted Services	NYE UNIFORM COMPANY	NAMEBAR	46.26	
101-336.000-802.000-CELLPH	Contracted Services	VERIZON WIRELESS	CELL PHONE CHARGES - MARCH	50.49	
101-336.000-802.000-TELEPH	Contracted Services	ACENTEK	TELEPHONE CHARGES - APRIL	283.62	
101-336.000-815.000	INSURANCE	BERENDS HENDRICKS STUIT	AUTO INSURANCE - 2026 CHEVROLET SILVE	27.00	
101-336.000-815.000	INSURANCE	BERENDS HENDRICKS STUIT	RENEWAL FIREFIGHTERS A&H POLICY	2,889.00	
101-336.000-926.000-ELECTR	UTILITIES	CONSUMERS ENERGY	ELECTRIC USAGE - APRIL	2,057.41	
101-336.000-935.000	Truck Maintenance	3RD COAST UPFITTING	REPAIR WATER LEAKING FROM PUMP HEATER	344.50	
101-336.000-935.000	Truck Maintenance	3RD COAST UPFITTING	REPAIR TANK TO PUMP HANDLE	281.00	
101-336.000-935.000	Truck Maintenance	NAPA - GENUINE PARTS COM	OIL & FUNNEL	39.69	
101-336.000-955.000	Miscellaneous	COREWELL HEALTH WEST OCC	SCREENING/TESTING - NEW EMPLOYEES	1,172.00	
101-336.000-955.000	Miscellaneous	COREWELL HEALTH WEST OCC	SCREENING/TESTING - NEW EMPLOYEE	26.00	
101-336.000-955.000	Miscellaneous	VERIZON WIRELESS	MIRAKI MODEM & CELL PHONE CHARGES - M	6.04	

GL Number	GL Desc	Vendor	Invoice Description	Amount	Check #
Fund 101 General Fund					
Dept 336.000 FIRE DEPT					
		Total For Dept 336.000 FIRE DEPT		10,221.96	
Dept 448.000 STREET LIGHTS					
101-448.000-920.000	Electricity	CONSUMERS ENERGY	ELECTRIC USAGE - APRIL	9,285.22	
101-448.000-920.002	Henry St/Town Center Electricit	CONSUMERS ENERGY	ELECTRIC USAGE - APRIL	87.49	
		Total For Dept 448.000 STREET LIGHTS		9,372.71	
Dept 449.000 HIGHWAY-M45					
101-449.000-926.000-ELECTR	UTILITIES	CONSUMERS ENERGY	ELECTRIC USAGE - APRIL	1,667.60	
101-449.000-930.000	Maintenance	MENARDS-HOLLAND INC	MAINTENANCE SUPPLIES	243.78	
101-449.000-930.000	Maintenance	MENARDS-HOLLAND INC	MAINTENANCE SUPPLIES	126.00	
101-449.000-955.000	Miscellaneous	KUSTOM DEZINS LLC	COATS/VEST WITH TOWNSHIP LOGO	148.00	
		Total For Dept 449.000 HIGHWAY-M45		2,185.38	
Dept 567.000 CEMETERY					
101-567.000-926.000-ELECTR	UTILITIES	CONSUMERS ENERGY	ELECTRIC USAGE - APRIL	30.83	
		Total For Dept 567.000 CEMETERY		30.83	
Dept 701.000 PLANNING & ZONING					
101-701.000-802.000	Contracted Services	FRESH COAST PLANNING LLC	PLANNING SERVICES - MARCH	2,610.00	
		Total For Dept 701.000 PLANNING & ZONING		2,610.00	
Dept 751.000 RECREATION AND PARKS					
101-751.000-863.000	FUEL	WEX BANK-EXXON MOBIL	FUEL CHARGES	392.51	
101-751.000-926.000-ELECTR	UTILITIES	CONSUMERS ENERGY	ELECTRIC USAGE - APRIL	522.59	
101-751.000-930.000	Maintenance	AMAZON CAPITAL SERVICES	BLOCK BEARINGS	14.99	
101-751.000-930.000	Maintenance	FAMILY FARM & HOME INC	MAINTENANCE SUPPLIES	168.37	
101-751.000-930.000	Maintenance	MENARDS-HOLLAND INC	MAINTENANCE SUPPLIES	699.90	
101-751.000-930.000	Maintenance	MENARDS-HOLLAND INC	MAINTENANCE SUPPLIES	65.81	
101-751.000-930.000	Maintenance	MICHIGAN WOOD FIBERS LLC	SHREDDED HARDWOOD BARK	1,386.00	
		Total For Dept 751.000 RECREATION AND PARKS		3,250.17	
Dept 753.000 COMMUNITY PROMOTIONS					
101-753.000-807.000-CONCER	COMMUNITY PROGRAMS	A&B RENTAL	20X40 SHADE TENTS	2,500.00	
101-753.000-807.000-CONCER	COMMUNITY PROGRAMS	ASCAP	MUSIC LICENSE FEE - CONCERTS IN THE P	461.79	
		Total For Dept 753.000 COMMUNITY PROMOTIONS		2,961.79	
Dept 790.000 LIBRARY					
101-790.000-721.000-DUESXX	PROFESSIONAL DEVELOPMENT	MICHIGAN LIBRARY ASSOCIA	MEMBERSHIP RENEWAL - BLACK	791.00	
101-790.000-732.000-AVMATE	SUPPLIES	AMAZON CAPITAL SERVICES	FLASH DRIVE FOR CONSOLES	14.36	
101-790.000-732.000-AVMATE	SUPPLIES	AMAZON CAPITAL SERVICES	SWITCH GAMES	62.77	
101-790.000-732.000-AVMATE	SUPPLIES	MICROMARKETING LLC	BOOK ON CD	35.95	
101-790.000-732.000-AVMATE	SUPPLIES	MIDWEST TAPE LLC	MUSIC CD COLLECTION	16.47	
101-790.000-732.000-AVMATE	SUPPLIES	MIDWEST TAPE LLC	CD COLLECTION	17.22	
101-790.000-732.000-AVMATE	SUPPLIES	MIDWEST TAPE LLC	DVD COLLECTION	29.22	
101-790.000-732.000-BOOKSX	SUPPLIES	AMAZON CAPITAL SERVICES	ADULT COLLECTION	11.99	
101-790.000-732.000-BOOKSX	SUPPLIES	AMAZON CAPITAL SERVICES	ADULT NON-FICTION COLLECTION	130.77	
101-790.000-732.000-BOOKSX	SUPPLIES	AMAZON CAPITAL SERVICES	ADULT COLLECTION	54.08	
101-790.000-732.000-BOOKSX	SUPPLIES	AMAZON CAPITAL SERVICES	ADULT NON-FICTION COLLECTION	19.25	
101-790.000-732.000-BOOKSX	SUPPLIES	AMAZON CAPITAL SERVICES	RETURN CREDIT	(19.25)	
101-790.000-732.000-BOOKSX	SUPPLIES	AMAZON CAPITAL SERVICES	ADULT COLLECTION	97.89	
101-790.000-732.000-BOOKSX	SUPPLIES	AMAZON CAPITAL SERVICES	ADULT NON-FICTION COLLECTION	32.45	
101-790.000-732.000-BOOKSX	SUPPLIES	AMAZON CAPITAL SERVICES	ADULT COLLECTION	16.50	
101-790.000-732.000-BOOKSX	SUPPLIES	AMAZON CAPITAL SERVICES	ADULT COLLECTION	11.40	

BOTH JOURNALIZED AND UNJOURNALIZED

BOTH OPEN AND PAID

GL Number	GL Desc	Vendor	Invoice Description	Amount	Check #
Fund 101 General Fund					
Dept 790.000 LIBRARY					
101-790.000-732.000-BOOKSX	SUPPLIES	AMAZON CAPITAL SERVICES	ADULT COLLECTION	144.73	
101-790.000-732.000-BOOKSX	SUPPLIES	GALE/CENGAGE LEARNING IN	LARGE PRINT COLLECTION	32.79	
101-790.000-732.000-BOOKSX	SUPPLIES	MICROMARKETING LLC	ADULT COLLECTION	99.18	
101-790.000-732.000-BOOKSX	SUPPLIES	MICROMARKETING LLC	ADULT COLLECTION	68.80	
101-790.000-732.000-CHILDB	SUPPLIES	AMAZON CAPITAL SERVICES	YOUTH COLLECTION	9.01	
101-790.000-732.000-CHILDB	SUPPLIES	AMAZON CAPITAL SERVICES	YOUTH COLLECTION	75.94	
101-790.000-732.000-CHILDB	SUPPLIES	AMAZON CAPITAL SERVICES	YOUTH COLLECTION	25.33	
101-790.000-732.000-CHILDB	SUPPLIES	AMAZON CAPITAL SERVICES	YOUTH COLLECTION	44.86	
101-790.000-732.000-CHILDB	SUPPLIES	AMAZON CAPITAL SERVICES	YOUTH COLLECTION	6.88	
101-790.000-732.000-CHILDB	SUPPLIES	AMAZON CAPITAL SERVICES	YOUTH COLLECTION	39.09	
101-790.000-732.000-CHILDB	SUPPLIES	AMAZON CAPITAL SERVICES	YOUTH COLLECTION	15.30	
101-790.000-732.000-CHILDB	SUPPLIES	AMAZON CAPITAL SERVICES	YOUTH COLLECTION	31.63	
101-790.000-732.000-CHILDB	SUPPLIES	AMAZON CAPITAL SERVICES	YOUTH COLLECTION	11.54	
101-790.000-732.000-CHILDB	SUPPLIES	AMAZON CAPITAL SERVICES	YOUTH COLLECTION	8.44	
101-790.000-732.000-CHILDB	SUPPLIES	AMAZON CAPITAL SERVICES	YOUTH COLLECTION	36.63	
101-790.000-732.000-CHILDB	SUPPLIES	AMAZON CAPITAL SERVICES	YOUTH COLLECTION	11.69	
101-790.000-732.000-CHILDB	SUPPLIES	AMAZON CAPITAL SERVICES	YOUTH COLLECTION	56.72	
101-790.000-732.000-CHILDB	SUPPLIES	AMAZON CAPITAL SERVICES	YOUTH COLLECTION	9.74	
101-790.000-732.000-CHILDB	SUPPLIES	AMAZON CAPITAL SERVICES	YOUTH COLLECTION	61.60	
101-790.000-732.000-CHILDB	SUPPLIES	AMAZON CAPITAL SERVICES	YOUTH COLLECTION	72.20	
101-790.000-732.000-CHILDB	SUPPLIES	AMAZON CAPITAL SERVICES	YOUTH COLLECTION	18.18	
101-790.000-732.000-CHILDB	SUPPLIES	AMAZON CAPITAL SERVICES	YOUTH COLLECTION	83.01	
101-790.000-732.000-CHILDB	SUPPLIES	AMAZON CAPITAL SERVICES	YOUTH COLLECTION	25.33	
101-790.000-732.000-CHILDB	SUPPLIES	GALE/CENGAGE LEARNING IN	YOUTH LARGE PRINT COLLECTION	22.49	
101-790.000-732.000-GENSUP	SUPPLIES	AMAZON CAPITAL SERVICES	PAID STAMP	12.34	
101-790.000-732.000-GENSUP	SUPPLIES	AMAZON CAPITAL SERVICES	PAPER TOWELS & HAND SANITIZER	28.50	
101-790.000-732.000-GENSUP	SUPPLIES	AMAZON CAPITAL SERVICES	SANITIZING ALCOHOL	25.64	
101-790.000-802.000	Contracted Services	LIBRARY MARKET	ANNUAL LIBRARY CALENDAR & WEBSITE FEE	4,000.00	
101-790.000-802.000-AQUARI	Contracted Services	AQUA BLUE AQUARIUM SOLUT	AQUARIUM MAINTENANCE - MARCH	75.00	
101-790.000-802.000-DIGITA	Contracted Services	LAKELAND LIBRARY COOPERA	QTRLY OVERDRIVE: APR THRU JUN	610.72	
101-790.000-802.000-DIGITA	Contracted Services	MIDWEST TAPE LLC	DIGITAL COLLECTION - MARCH	1,700.05	
101-790.000-802.000-EPSSEC	Contracted Services	ENGINEERED PROTECTION SY	VIDEO SERVICE @ MAY THRU JULY	136.38	
101-790.000-802.000-HGTSP0	Contracted Services	T-MOBILE	WIRELESS WIFI HOTSPOTS - MARCH	258.30	
101-790.000-802.000-ITMONT	Contracted Services	NICHOLAS HEIMLER	INTERNAL BROADBAND SERVICES - JAN THR	285.00	
101-790.000-802.000-ITMONT	Contracted Services	SANILAC COMPUTER PRODUCT	MCONSOLE ANNUAL SUPPORT	220.00	
101-790.000-802.000-LAKELA	Contracted Services	LAKELAND LIBRARY COOPERA	QTRLY BILLING: APR THRU JUN	6,706.85	
101-790.000-807.000-ADULTP	COMMUNITY PROGRAMS	KAITLIN ALVAREZ	WOODBURNING PROGRAM - APRIL	120.00	
101-790.000-807.000-ADULTP	COMMUNITY PROGRAMS	TAWNEE SZCZEPANEK	EXPENSES REIMBURSEMENT	61.22	
101-790.000-807.000-SUMMER	COMMUNITY PROGRAMS	AMAZON CAPITAL SERVICES	GOLDEN BOOK PRIZES	35.96	
101-790.000-807.000-SUMMER	COMMUNITY PROGRAMS	COLLABORATIVE SUMMER LIB	SR DECORATIONS & SHIRTS	290.38	
101-790.000-807.000-YOUTH	COMMUNITY PROGRAMS	AMAZON CAPITAL SERVICES	YOUTH PROGRAM SUPPLIES	6.99	
101-790.000-807.000-YOUTH	COMMUNITY PROGRAMS	AMAZON CAPITAL SERVICES	YOUTH PROGRAM SUPPLIES	6.99	
101-790.000-860.000	MILEAGE	ASHLEY JOHNSON	MILEAGE & EXPENSES REIMBURSEMENT	135.72	
101-790.000-926.000-ELECTR	UTILITIES	CONSUMERS ENERGY	ELECTRIC USAGE - APRIL	610.49	
101-790.000-930.000	Maintenance	MICHIGAN WOOD FIBERS LLC	SHREDDED HARDWOOD BARK	200.00	
Total For Dept 790.000 LIBRARY				17,859.71	
Total For Fund 101 General Fund				98,041.25	
Fund 249 Building Department Fund					
Dept 223.000 AUDIT					
249-223.000-810.000	AUDIT	VREDEVELD HAEFNER LLC	FINANCIAL STATEMENTS AUDIT - 2025	320.00	

INVOICE GL DISTRIBUTION REPORT FOR ALLENDALE CHARTER TOWNSHIP
INVOICE ENTRY DATES 04/01/2026 - 04/14/2026
BOTH JOURNALIZED AND UNJOURNALIZED
BOTH OPEN AND PAID

GL Number	GL Desc	Vendor	Invoice Description	Amount	Check #
Fund 249 Building Department Fund					
Dept 223.000 AUDIT					
Total For Dept 223.000 AUDIT				320.00	
Dept 371.000 INSPECTION DEPARTMENT					
249-371.000-802.000	Contracted Services	PROFESSIONAL CODE INSPEC	PERMIT INSPECTIONS - MARCH	30,043.80	
Total For Dept 371.000 INSPECTION DEPARTMENT				30,043.80	
Total For Fund 249 Building Department Fund				30,363.80	
Fund 254 Cemetery Improvement Fund					
Dept 223.000 AUDIT					
254-223.000-810.000	AUDIT	VREDEVELD HAEFNER LLC	FINANCIAL STATEMENTS AUDIT - 2025	160.00	
Total For Dept 223.000 AUDIT				160.00	
Total For Fund 254 Cemetery Improvement Fund				160.00	
Fund 404 CAPITAL/ONE-TIME PROJECTS FUND					
Dept 262.000 ELECTIONS					
404-262.000-971.000	CAPITAL OUTLAY	RAMAKER & ASSOCIATES INC	CEMETERY PROGRAM-CIMS PLATINUM MAPPIN	2,500.00	
Total For Dept 262.000 ELECTIONS				2,500.00	
Dept 790.000 LIBRARY					
404-790.000-971.000	CAPITAL OUTLAY	COMMERCIAL FLOORING & IN	NEW FLOORING IN PROGRAM ROOM	8,986.00	
Total For Dept 790.000 LIBRARY				8,986.00	
Total For Fund 404 CAPITAL/ONE-TIME PROJECTS FUND				11,486.00	
Fund 490 WWTP BUILDING FUND					
Dept 537.000 SEWER					
490-537.000-971.000-GVSUTR	CAPITAL OUTLAY	F&V CONSTRUCTION MGMT IN	CONSTRUCTION ENGINEERING - APP #34	273,433.70	
490-537.000-971.000-WWTTPH	CAPITAL OUTLAY	MOORE & BRUGGINK INC	WRRF ENGINEERING & INSPECTION - FEBRU	37,754.00	
490-537.000-971.000-WWTTPH	CAPITAL OUTLAY	RK DAVIS INC	WRRF PLANT DESIGN & CONSTRUCTION - FE	222,341.67	
Total For Dept 537.000 SEWER				533,529.37	
Total For Fund 490 WWTP BUILDING FUND				533,529.37	
Fund 494 Dda Development Fund					
Dept 223.000 AUDIT					
494-223.000-810.000	AUDIT	VREDEVELD HAEFNER LLC	FINANCIAL STATEMENTS AUDIT - 2025	2,560.00	
Total For Dept 223.000 AUDIT				2,560.00	
Dept 901.000 CONSTRUCTION					
494-901.000-971.038	PARK IMPROVEMENT	FLEIS & VANDENBRINK ENG'	CONSULTATION SERVICES - TWP PARK - FE	21,800.00	
Total For Dept 901.000 CONSTRUCTION				21,800.00	
Total For Fund 494 Dda Development Fund				24,360.00	
Fund 592 Water & Sewer					
Dept 000.000 REVENUE					
592-000.000-231.000	DEFERRED COMP PAYABLE	EMPOWER	FEB EFT PAYMENT	1,278.06	32726
592-000.000-231.010	401A PAYABLE	EMPOWER	FEB EFT PAYMENT	6,843.88	32726
592-000.000-231.020	401A LOAN PAYABLE	EMPOWER	FEB EFT PAYMENT	315.73	32726
592-000.000-231.030	Misc Ins - Aflac	AFLAC	MISCELLANEOUS INSURANCE - MARCH	117.28	
592-000.000-266.000	WAGE GARNISHMENT PAYABLE	MICHIGAN STATE DISBURSEM	CHILD SUPPORT DISBURSEMENT	332.64	
592-000.000-284.267	EMERALD SPRINGS PHASE 2	PREIN & NEWHOF PC INC	MONTHLY SAMPLING - MARCH	40.00	

User: DENISE
DB: ALLENDALE

INVOICE ENTRY DATES 04/01/2026 - 04/14/2026

BOTH JOURNALIZED AND UNJOURNALIZED

BOTH OPEN AND PAID

GL Number	GL Desc	Vendor	Invoice Description	Amount	Check #
Fund 592 Water & Sewer					
Dept 000.000 REVENUE					
Total For Dept 000.000 REVENUE				8,927.59	
Dept 248.000 ADMINISTRATION					
592-248.000-810.000	AUDIT	VREDEVELD HAEFNER LLC	FINANCIAL STATEMENTS AUDIT - 2025	7,200.00	
592-248.000-900.000	PRINTING, PUBLISHING, & POSTAGE	INVOICE CLOUD INC	PAPERLESS PREPARATION	1.40	
Total For Dept 248.000 ADMINISTRATION				7,201.40	
Dept 536.000 WATER					
592-536.000-718.000	DISABILITY INS	MUTUAL OF OMAHA INSURANC	DISABILITY INSURANCE - APRIL	133.31	
592-536.000-721.000-DUESXX	PROFESSIONAL DEVELOPMENT	AMERICAN WATER WORKS ASS	UTILITY MEMBERSHIP DUES - DOORNBOS	443.00	
592-536.000-721.000-SEMINA	PROFESSIONAL DEVELOPMENT	GARY NESTLE II	MILEAGE REIMBURSEMENT - MRWA/ADMIN CO	169.65	
592-536.000-721.000-SEMINA	PROFESSIONAL DEVELOPMENT	MICHIGAN RURAL WATER ASS	ANNUAL CONFERENCE WATER/WASTEWATER -	250.00	
592-536.000-721.000-SEMINA	PROFESSIONAL DEVELOPMENT	TAMMY WALKER	MILEAGE REIMBURSEMENT	72.14	
592-536.000-732.000-GENSUP	SUPPLIES	ALLENDALE ACE HOME CENTE	SUPPLIES & SUMP PUMP REPLACEMENT - WA	144.28	
592-536.000-732.000-GENSUP	SUPPLIES	AMAZON CAPITAL SERVICES	PRESSURE WASHER ENDS	8.55	
592-536.000-732.000-GENSUP	SUPPLIES	AMAZON CAPITAL SERVICES	BREAKROOM COFFEE	28.47	
592-536.000-732.000-METERS	SUPPLIES	ETNA SUPPLY COMPANY	VARIOUS METERS & PARTS	4,022.50	
592-536.000-732.000-METERS	SUPPLIES	ETNA SUPPLY COMPANY	1.5 INCH METERS	13,891.80	
592-536.000-732.000-OFFICE	SUPPLIES	AMAZON CAPITAL SERVICES	KLEENEX FACIAL TISSUES	13.84	
592-536.000-732.000-OFFICE	SUPPLIES	AMAZON CAPITAL SERVICES	PRINTER INK CARTRIDGE	24.96	
592-536.000-732.000-TOOLSX	SUPPLIES	ETNA SUPPLY COMPANY	FIELD LOGIC COMMUNICATOR	550.00	
592-536.000-802.000-MULTIP	Contracted Services	AMBS CALL CENTER	EMERGENCY NUMBER	60.00	
592-536.000-802.000-MULTIP	Contracted Services	H2O COMPLIANCE SERVICES	CROSS CONNECTION CONTROL MGMT - MARCH	1,140.75	
592-536.000-802.000-TELEPH	Contracted Services	ACENTEK	TELEPHONE CHARGES - APRIL	69.95	
592-536.000-802.000-TELEPH	Contracted Services	VERIZON WIRELESS	CELL PHONE CHARGES - MARCH	178.90	
592-536.000-803.000	Professional Services	FLEIS & VANDENBRINK ENG'	CONSULTATION SERVICES - FEBRUARY	3,610.00	
592-536.000-926.000-ELECTR	UTILITIES	CONSUMERS ENERGY	ELECTRIC USAGE - APRIL	4,799.87	
592-536.000-930.000-GENMAI	MAINTENANCE	WOLVERINE POWER SYSTEMS	BATTERY CHARGER ISSUES	194.50	
592-536.000-930.000-SYSTEM	MAINTENANCE	ALLENDALE ACE HOME CENTE	SUPPLIES & SUMP PUMP REPLACEMENT - WA	230.38	
592-536.000-935.000	Truck Maintenance	ACTION GLASS ENTERPRISES	WINDSHIELD - 2018 CHEVY SILVERADO	130.00	
592-536.000-935.000	Truck Maintenance	TOLMAN'S AUTO TECH GROUP	2022 CHEVY SILVERADO - OIL CHANGE	48.09	
592-536.000-935.000	Truck Maintenance	TOLMAN'S AUTO TECH GROUP	2019 CHEVY IMPALA - OIL CHANGE	40.59	
592-536.000-935.000	Truck Maintenance	TOLMAN'S AUTO TECH GROUP	2016 CHEVY SILVERADO - OIL CHANGE	41.25	
592-536.000-971.000-NORTHS	CAPITAL OUTLAY	FLEIS & VANDENBRINK ENG'	NORTH/SOUTH WATER MAIN LOOPS - FEBRUA	7,000.00	
Total For Dept 536.000 WATER				37,296.78	
Dept 537.000 SEWER					
592-537.000-718.000	DISABILITY INS	MUTUAL OF OMAHA INSURANC	DISABILITY INSURANCE - APRIL	133.31	
592-537.000-721.000-SEMINA	PROFESSIONAL DEVELOPMENT	ANTHONY WHITFIELD	CLASS D PRE-CLASS REIMBURSEMENT	285.59	
592-537.000-721.000-SEMINA	PROFESSIONAL DEVELOPMENT	GARY NESTLE II	MILEAGE REIMBURSEMENT - MRWA/ADMIN CO	255.20	
592-537.000-721.000-SEMINA	PROFESSIONAL DEVELOPMENT	TAMMY WALKER	MILEAGE REIMBURSEMENT	72.14	
592-537.000-732.000-CHEMIC	SUPPLIES	FAMILY FARM & HOME INC	LIME	27.50	
592-537.000-732.000-CHEMIC	SUPPLIES	HAVILAND PRODUCTS COMPAN	POLYMER - CHEMICAL	5,270.00	
592-537.000-732.000-GENSUP	SUPPLIES	ALLENDALE ACE HOME CENTE	SUPPLIES - WASTE DEPT	38.69	
592-537.000-732.000-GENSUP	SUPPLIES	AMAZON CAPITAL SERVICES	HOSE NOZZLE & HAND SANITIZER	107.61	
592-537.000-732.000-GENSUP	SUPPLIES	AMAZON CAPITAL SERVICES	PRESSURE WASHER ENDS	8.54	
592-537.000-732.000-GENSUP	SUPPLIES	AMAZON CAPITAL SERVICES	BREAKROOM COFFEE	28.48	
592-537.000-732.000-LABSUP	SUPPLIES	IDEXX DISTRIBUTION INC	LAB REAGENTS	2,260.10	
592-537.000-732.000-LABSUP	SUPPLIES	NORTH CENTRAL LABORATORI	GLASSWARE & CONSUMABLES	533.19	
592-537.000-732.000-OFFICE	SUPPLIES	AMAZON CAPITAL SERVICES	KLEENEX FACIAL TISSUES	13.85	
592-537.000-732.000-OFFICE	SUPPLIES	AMAZON CAPITAL SERVICES	RED PERMANENT MARKERS	12.97	
592-537.000-732.000-OFFICE	SUPPLIES	AMAZON CAPITAL SERVICES	PRINTER INK CARTRIDGE	24.96	
592-537.000-732.000-TOOLSX	SUPPLIES	HD SUPPLY INC	DRAIN SNAKE	66.48	

INVOICE GL DISTRIBUTION REPORT FOR ALLENDALE CHARTER TOWNSHIP
INVOICE ENTRY DATES 04/01/2026 - 04/14/2026
BOTH JOURNALIZED AND UNJOURNALIZED
BOTH OPEN AND PAID

GL Number	GL Desc	Vendor	Invoice Description	Amount	Check #
Fund 592 Water & Sewer					
Dept 537.000 SEWER					
592-537.000-802.000-MULTIP	Contracted Services	AMBS CALL CENTER	EMERGENCY NUMBER	60.00	
592-537.000-802.000-MULTIP	Contracted Services	PREIN & NEWHOF PC INC	MONTHLY SAMPLING - MARCH	390.00	
592-537.000-802.000-TELEPH	Contracted Services	ACENTEK	TELEPHONE CHARGES - APRIL	683.75	
592-537.000-802.000-TELEPH	Contracted Services	VERIZON WIRELESS	MIRAKI MODEM & CELL PHONE CHARGES - M	492.78	
592-537.000-802.000-TELEPH	Contracted Services	VERIZON WIRELESS	CELL PHONE CHARGES - MARCH	178.90	
592-537.000-803.000	Professional Services	FLEIS & VANDENBRINK ENG'	CONSULTATION SERVICES - FEBRUARY	8,157.78	
592-537.000-803.000	Professional Services	MOORE & BRUGGINK INC	ASSET MANAGEMENT PROGRAMS DISCUSSION	210.46	
592-537.000-926.000-ELECTR	UTILITIES	CONSUMERS ENERGY	ELECTRIC USAGE - APRIL	1,251.62	
592-537.000-930.000-COLLEC	MAINTENANCE	GFL ENVIRONMENTAL SERVIC	SEWER BACKUP NORTH/SOUTH TRUNK	3,828.00	
592-537.000-930.000-COLLEC	MAINTENANCE	GFL ENVIRONMENTAL SERVIC	CREEK CLEAN-UP @ KNOLLWOOD DRIVE	16,118.75	
592-537.000-930.000-GENMAI	MAINTENANCE	WOLVERINE POWER SYSTEMS	BATTERY CHARGER ISSUES	194.50	
592-537.000-930.000-WRRFMA	MAINTENANCE	PARKWAY ELECTRIC & COMMU	TEST PUMP TRIPPING BREAKER	240.00	
592-537.000-935.000	Truck Maintenance	ACTION GLASS ENTERPRISES	WINDSHIELD - 2018 CHEVY SILVERADO	130.00	
592-537.000-935.000	Truck Maintenance	TOLMAN'S AUTO TECH GROUP	2022 CHEVY SILVERADO - OIL CHANGE	48.09	
592-537.000-935.000	Truck Maintenance	TOLMAN'S AUTO TECH GROUP	2019 CHEVY IMPALA - OIL CHANGE	40.59	
592-537.000-935.000	Truck Maintenance	TOLMAN'S AUTO TECH GROUP	2016 CHEVY SILVERADO - OIL CHANGE	41.25	
592-537.000-971.000-PIERCE	CAPITAL OUTLAY	F&V CONSTRUCTION MGMT IN	PIERCE STREET IMPROVEMENTS - APP #9 -	180,312.00	
592-537.000-971.030	WWTP EXPANSION PHASE 2	GFL ENVIRONMENTAL SERVIC	SEED HAULING	15,646.30	
Total For Dept 537.000 SEWER				237,163.38	
Total For Fund 592 Water & Sewer				290,589.15	
Fund 811 Road Fund					
Dept 223.000 AUDIT					
811-223.000-810.000	AUDIT	VERDEVELD HAEFNER LLC	FINANCIAL STATEMENTS AUDIT - 2025	640.00	
Total For Dept 223.000 AUDIT				640.00	
Total For Fund 811 Road Fund				640.00	

GL Number	GL Desc	Vendor	Invoice Description	Amount	Check #
-----------	---------	--------	---------------------	--------	---------

Fund Totals:

Fund 101 General Fund	98,041.25
Fund 249 Building Depa	30,363.80
Fund 254 Cemetery Impr	160.00
Fund 404 CAPITAL/ONE-T	11,486.00
Fund 490 WWTP BUILDING	533,529.37
Fund 494 Dda Developme	24,360.00
Fund 592 Water & Sewer	290,589.15
Fund 811 Road Fund	640.00

Total For All Funds:	<u>989,169.57</u>
----------------------	-------------------

INTERIM PAYMENTS
Board Meeting: 04/13/26

DATE	CHECK #	AMOUNT	VENDOR	DESCRIPTION
3/26/2026	EFT	\$ 97,530.76	EMPLOYEES	Bi-Weekly Payroll
3/26/2026	EFT	\$ 26,946.92	FEDERAL GOV'T	Payroll IRS Tax Payment
3/26/2026	108555	\$ 2,811.27	DELTA DENTAL PLAN OF MICHIGAN INC	Dental Health Insurance - April
3/26/2026	108556	\$ 45,422.87	PRIORITY HEALTH	Health Insurance - April
3/26/2026	108557	\$ 159.18	UNUM LIFE INSURANCE COMPANY	Life Insurance - April
3/30/2026	108558	\$ 16,893.41	DTE ENERGY	Heating Fuel Usage - March
3/30/2026	108559	\$ 120.00	OTTAWA CTY REGISTER OF DEEDS	Recording Easements (4)
3/30/2026	108560	\$ 739.18	VISION SERVICE PLAN	Vision Health Insurance - April
3/31/2026	108561	\$ 429.90	HOEKSTRA TRUCK EQUIPMENT CO INC	Diagnose & Repair Back-Up Plow
4/3/2026	EFT	\$ 9,436.17	State of Michigan payroll taxes	March payroll taxes - State of MI
4/3/2026	EFT	\$ 20,514.62	Paid on Call Fire	March Payroll
4/3/2026	EFT	\$ 4,730.86	Paid on Call - Federal tax, SocSec, Med	payroll taxes - IRS POC Fire
4/6/2026	EFT	\$ 249.43	City of Grand Rapids	March payroll taxes
4/6/2026	EFT	\$ 81.94	City of Muskegon	March payroll taxes
4/6/2026	EFT	\$ 122.06	City of Walker	March payroll taxes
4/9/2026	EFT	\$ 97,081.07	EMPLOYEES	Bi-Weekly Payroll
4/9/2026	EFT	\$ 27,276.90	FEDERAL GOV'T	Payroll IRS Tax Payment
		\$ 350,546.54		

ALLENDALE PUBLIC UTILITIES 2025 YEAR IN REVIEW



DEPARTMENT PERSONNEL



SUPERINTENDENT: Chad E. Doornbos

Licenses: Water Distribution "S-1, S-2, S-3, S-4"
Wastewater "A, B, C & D"



WATER SUPERVISOR: Garry Scholten, Jr.

Licenses: Water Distribution "S-2, S-3, S-4"
Wastewater "C & D"



WASTEWATER SUPERVISOR: Gary Nestle II

Licenses: Water Distribution "S-4"
Wastewater "B, C, D"



PUBLIC UTILITY OPERATOR II: Ryan Vander Ploeg
Licenses: Water Distribution "S-2, S-3, S-4"
Wastewater "B,C, D"



PUBLIC UTILITY OPERATOR I: Rob Lamb
Licenses: Water Distribution "S-3, S-4"



PUBLIC UTILITY OPERATOR I: Michael Carey
Licenses: Water Distribution "S-4"



PUBLIC UTILITY OPERATOR I: Bryan Campos
Licenses: Water Distribution "S-2, S-3, S-4"



PUBLIC UTILITY OPERATOR I: Anthony Whitfield



UTILITY FIELD INSPECTOR: Jon Carrier

Licenses: Water Distribution "S-4"



LAB TECHNICIAN: Tyler Vereeke

Licenses: Wastewater "D"



PUBLIC UTILITIES CLERK: Tammy Walker

OPERATIONS

The Water Resource Recovery Facility (WRRF) is staffed from the hours of 7:00am to 4:00pm Monday through Friday. On weekends, one operator is on call and works both Saturday and Sunday performing the required daily work which includes lab tests, recording meter readings, and checking on the many automated functions of the wastewater plant to ensure proper operation. The operator is also available twenty-four (24) hours a day for emergency calls for the following week. These emergency callouts/after hour events can range anywhere from Miss Dig's to a very complex issue such as a lift station failure or a water main break. All of our critical points are monitored by alarm systems which will alert the on-call person via text and email to their phone.

There are five major components of the water and sewer department. They consist of the water distribution system, the water resource recovery facility, the sewer collection system, construction projects and Miss Digs. I will discuss each of these in the following paragraphs in more detail.

First, the water distribution system consists of 73.05 miles of watermain, the appurtenances, two water towers, two pumping stations and two pressure-reducing valve buildings. Three times per month water samples from various distribution points are tested for chlorine residual and taken to the City of Grand Rapids Lake Michigan Filtration Plant for bacterial analysis. For our valve exercising and hydrant flushing program, we have broken the township into seven quadrants. Each year we attempt to complete one to two quadrants. This ensures that valves and hydrants are working in an emergency situation. We are also required by EGLE to have a Lead and Copper and Cross Connection Control Program.

Second, is the wastewater side of the operations. There are many things that are going on here also. We treat approximately 1.28 million gallons of sewage daily when the college is in session. This is no easy task considering all the equipment involved and the maintenance that goes along with it. In order for us to meet our discharge limits, we have to treat the sewage to limits set by EGLE. Daily we test for chlorine residual, total coliforms, pH, dissolved oxygen, suspended and volatile solids, phosphates, and biochemical oxygen demand. As part of the treatment process, we also operate an anaerobic digester. We are able to generate biogas through this process to reheat the digester. Part of our permit is the requirement of two mandated programs from EGLE. First, the mercury minimization, which ensures that we are monitoring for sources of mercury so we can keep it out of our collection system, bio-solids and receiving water. Second, the Industrial Pretreatment Program allows us to monitor industries which discharge to the WRRF. Allendale currently has two industries in this program.

A third component of our operations is the collection system for sewage. We currently have nine (9) lift stations. Each lift station has two pumps to give redundancy. We also have 51.94 miles of sewer main and 7.74 miles of force main that we are responsible for. The Township is currently split into six quadrants, and we inspect one quadrant per year. This helps us identify any problems that may be occurring within the pipes and manholes.

Construction year 2025 saw the completion of Woodford Farm Estates. Appendix D reflects the annual developer contribution to the overall assets of the Public Utility Department.

In reviewing the financials for the department, the year 2025 saw an increase to our overall cash funds in the amount of \$1,384,919. The available cash on hand is \$13,896,635. Please see Appendix E. As we continue planning and executing the capital improvement projects, we will have funds available to pay cash for some of these projects. At the end of 2025 the dept for water and sewer is \$5,380,311 million spread over four (4) bonds. We are currently making interest payments on the money we are borrowing for Phase II of the WRRF improvements. Principal payments are scheduled to begin October 1, 2026.

Appendix F shows our current treatment process at WRRF. The second picture in the appendix shows the different sampling points. Appendix G reflects a step-by-step description of the Nereda Process that is currently under construction. The anticipated start date is the first quarter of 2026. Appendix H shows the location of the sewer relocation project. We will be relocating a sewer line that lies within a storm water shed relocating it to the median of Lake Michigan Drive. This will consist of two (2) lift stations, force main, and gravity sewer to the WRRF

In 2025 there were zero (0) reportable injuries.

ALLENDALE PUBLIC UTILITIES

2025 YEAR IN REVIEW

2025 continued to be an exciting year for the utility department. Construction of the new water resource recovery facility, a lift station, and trunk sewer line were in full force. The Aqua Nereda process will allow us to abandon the Rotating Biological Contactors and bring in a treatment process that will carry us well into the future. Unfortunately, we were not able to start up the new process in 2025. We completed the M-45 lift station along with the force main and gravity sewer to the plant. We have a few more items to complete for these projects, but we are anticipating these three projects to be completed by year end 2026. In addition to the current utility expansion, we started a new lift station project at 56th Ave and Pierce Street.

We welcomed one new staff member to the team. Anthony Whitfield joined the team on May 1, 2025. Welcome. I would also like to congratulate a few of our operators on their license achievements. Ryan Vander Ploeg obtained his S-2 water distribution license. Bryan Campos obtained his S-3 and S-2 water distribution licenses. Michael Cary obtained his S-4 water distribution license.

Staff at the WRRF were busy this past year. There were no major maintenance occurrences this past year, but maintaining an aging facility is very important. As the construction of the new facility progressed, we continued to put new equipment online. Through manufacturer training, and observing the equipment, staff have become fluent in operating this new equipment. 2026 we will see more equipment and the facility come fully online.

Lead and Copper is still a focal point in the drinking water world. As part of the Lead and Cooper Program, we are required to do a service line inventory of our entire system. This entails exposing the service line and taking pictures. We continued this process with about 100 homes surveyed this past year. We also received our reduced monitoring schedule as we had no exceedances of lead or copper in our samples. We now are only required to sample five (5) homes every three years vs thirty (30) every year. We continue to do monthly bac-t samples and disinfection byproducts sampling. All this sampling was accomplished on time and there were no violations.

In reviewing water meters and customer accounts, it was reported that the water department installed 114 new meters and had 195 retrofits/repairs. Supply of meters has rebounded so we are ordering more meters to keep up with the batteries that are failing and replacing the brass meters that are still in the system. Currently, we have two styles of meters (brass and plastic).

The Township purchases fully treated water from the City of Grand Rapids. In 2025, we were billed for 784.062 million gallons which is a 8.8% increase from the year 2024. Of the 784.062 million gallons of water that was purchased, 437.0046 million gallons were returned and treated at WRRF. This reflects a 0.32% increase from the year 2024. See Appendix A. Appendix B shows the township water usage that is reported on our Annual Pumpage Report. In reviewing the pumpage reported and the amount of water that was billed, we see a 1% water loss. Normal range for this is 10-15% nationally. This loss is attributed to flushing, leaks and firefighting efforts. Appendix C reflects the month-by-month usage.

Construction year 2025 saw the completion of Woodford Farm Estates. Appendix D reflects the annual developer contribution to the overall assets of the Public Utility Department.

In reviewing the financials for the department, the year 2025 saw an increase to our overall cash funds in the amount of \$1,384,919. The available cash on hand is \$13,896,635. Please see Appendix E. As we continue planning and executing the capital improvement projects, we will have funds available to pay cash for some of these projects. At the end of 2025 the dept for water and sewer is \$5,380,311 million spread over four (4) bonds. We are currently making interest payments on the money we are borrowing for Phase II of the WRRF improvements. Principal payments are scheduled to begin October 1, 2026.

Appendix F shows our current treatment process at WRRF. The second picture in the appendix shows the different sampling points. Appendix G reflects a step-by-step description of the Nereda Process that is currently under construction. The anticipated start date is the first quarter of 2026. Appendix H shows the location of the sewer relocation project. We will be removing a sewer line from a storm drain and relocating it in the median of Lake Michigan Drive. This will consist of two (2) lift stations, force main, and gravity sewer to the WRRF

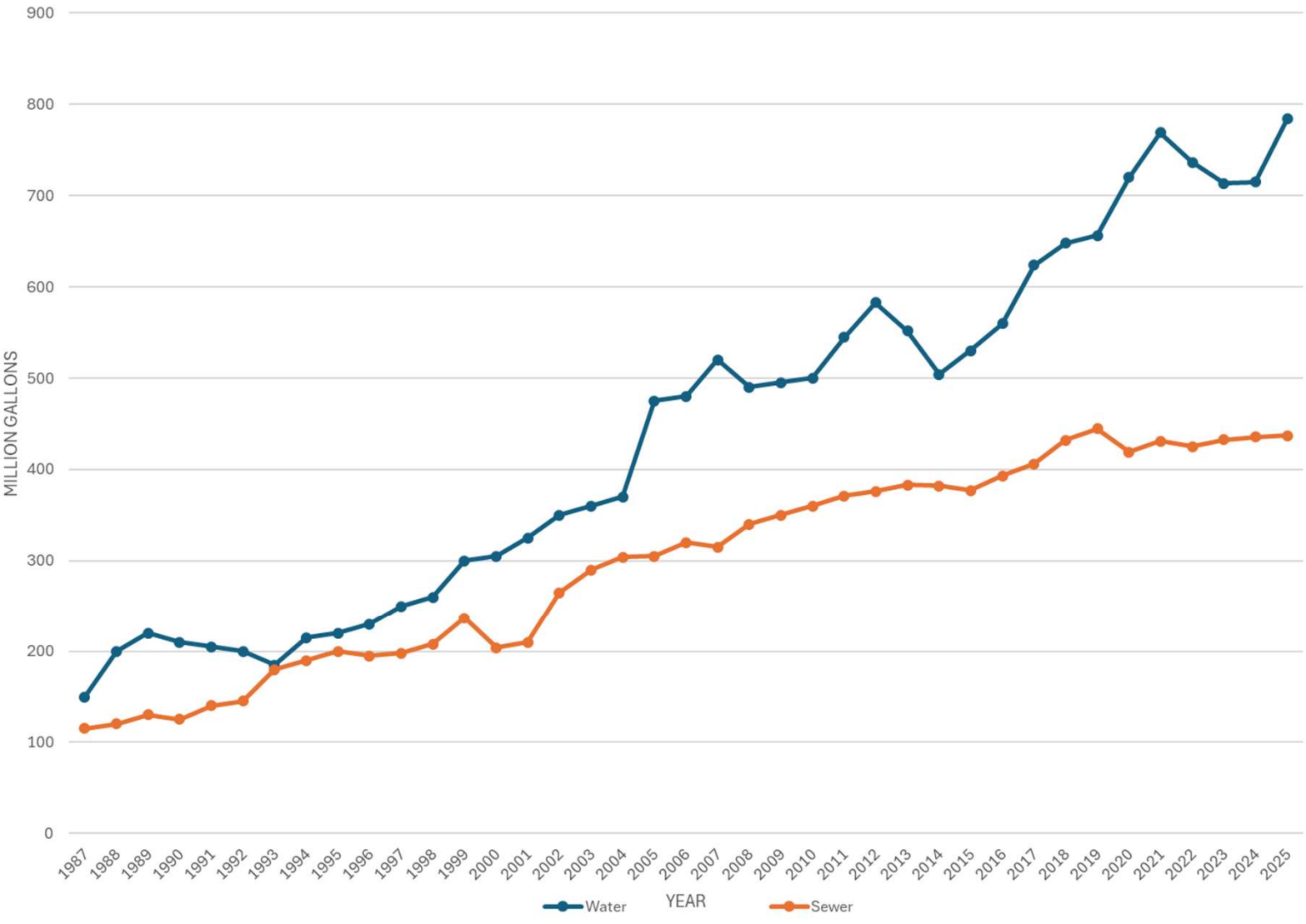
In 2025 there were zero (0) reportable injuries.

APPENDIX A

Allendale Water and Sewer Flows

YEAR	WATER (MG)	% Change	SEWER (MG)	% Change
1987	150		115	
1988	200		120	
1989	220		130	
1990	210		125	
1991	205		140	
1992	200		145	
1993	185		180	
1994	215		190	
1995	220		200	
1996	230		195	
1997	250		198	
1998	260		208	
1999	300		237	
2000	305		204	
2001	325		210	
2002	350		265	
2003	360		290	
2004	370		304	
2005	475		305	
2006	480		320	
2007	520		315	
2008	490		340	
2009	495		350	
2010	500		360	
2011	545		371	
2012	583		376	
2013	552		383	
2014	504		382	
2015	530		377	
2016	560		393	
2017	624		406	
2018	648		432	
2019	656.607	1.31	444.5803	2.83
2020	719.944	8.80	419.1976	-6.06
2021	769.231	6.41	430.9980	2.74
2022	736.437	-4.45	425.3428	-1.33
2023	713.650	-3.19	432.8186	1.73
2024	715.125	0.21	435.6054	0.64
2025	784.062	8.79	437.0046	0.32

ALLENDALE WATER AND SEWER FLOWS (MG)



APPENDIX B

MICHIGAN DEPARTMENT OF ENVIRONMENTAL QUALITY
 OFFICE OF DRINKING WATER AND MUNICIPAL ASSISTANCE
ANNUAL PUMPAGE/USAGE REPORT FOR COMMUNITY WATER SUPPLY



Issued under authority of 1976 PA 399, MCL 325.1001 *et al.*, and Administrative Rules, as amended.
 Failure to submit this form is a violation of Act 399 and may subject the water supply to enforcement penalties.

Administrative Rule R 325.11504 states in part that "...each Type I public water supply which does not submit a monthly operation report shall submit an annual report ... of water pumpage and water use." Complete this form and return it to the appropriate Department of Environmental Quality district office **by March 31** following the year covered by the report. For district office addresses, visit www.michigan.gov/deq and click on Locations. Add additional sheets as needed.

Water Supply: Allendale Charter Township WSSN: 00127 County: Ottawa

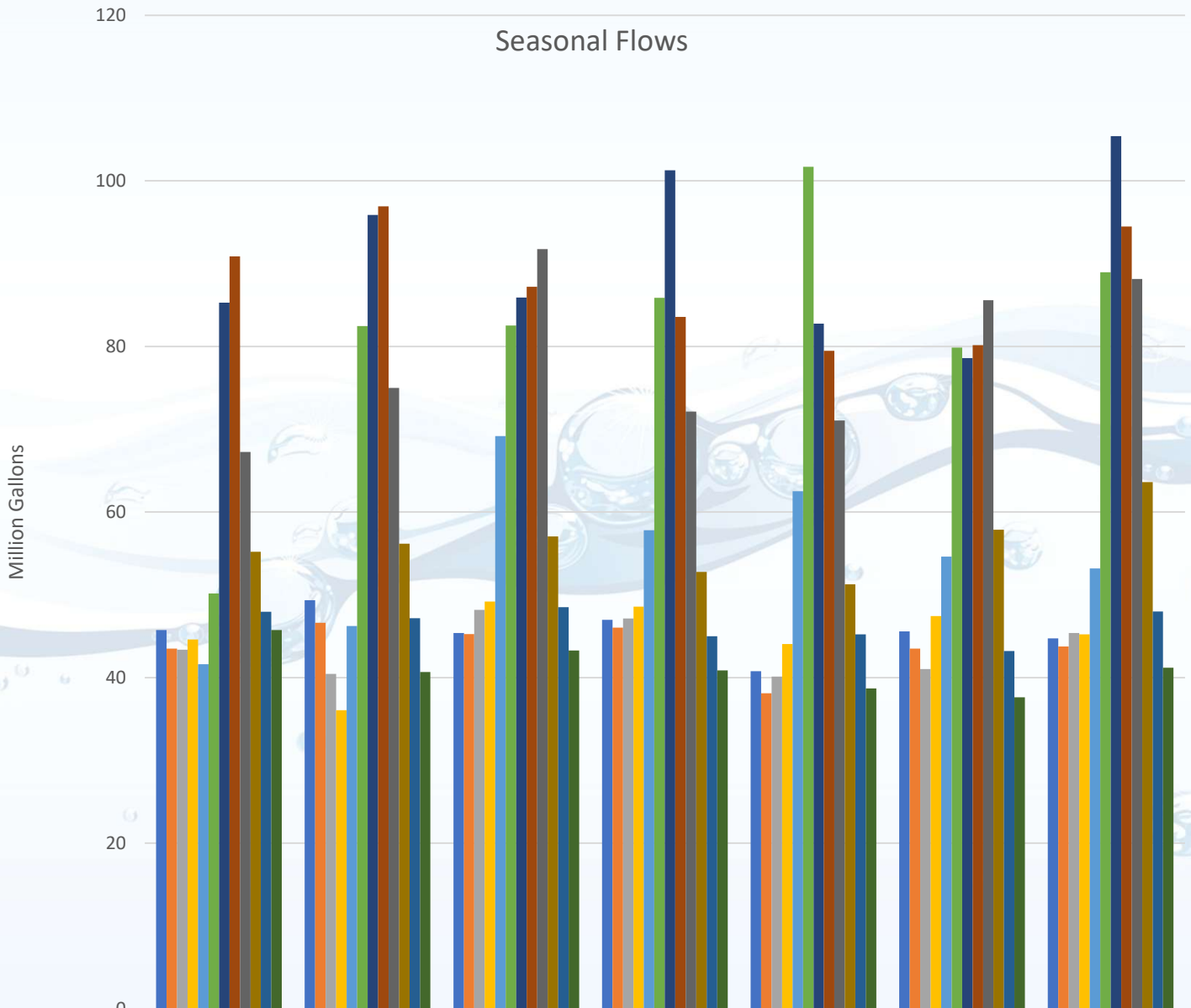
MONTHLY PUMPAGE/USAGE

Calendar Year 2025	Well No. _____ Capacity in gpm	Well No. _____ Capacity in gpm	Well No. _____ Capacity in gpm	Well No. _____ Capacity in gpm	Total Monthly Pumpage/Usage <input checked="" type="checkbox"/> in million gallons <input type="checkbox"/> in gallons
	_____	_____	_____	_____	
JANUARY					44.725
FEBRUARY					43.770
MARCH					45.400
APRIL					45.222
MAY					53.191
JUNE					88.969
JULY					105.407
AUGUST					94.491
SEPTEMBER					88.147
OCTOBER					63.634
NOVEMBER					47.999
DECEMBER					41.203

Comments:	Total Yearly Pumpage/Usage	762.158				
	Average Daily Pumpage/Usage (Total Yearly Pumpage / 365)	2.088				
	Maximum Daily Pumpage And Date	<table style="margin-left: auto; margin-right: auto; border-collapse: collapse;"> <tr> <td style="text-align: center; border-bottom: 1px solid black;">4.294</td> <td style="text-align: center; border-bottom: 1px solid black;">8/12/2025</td> </tr> <tr> <td style="text-align: center; font-size: small;">Pumpage</td> <td style="text-align: center; font-size: small;">Date</td> </tr> </table>	4.294	8/12/2025	Pumpage	Date
4.294	8/12/2025					
Pumpage	Date					
	Minimum Daily Pumpage And Date	<table style="margin-left: auto; margin-right: auto; border-collapse: collapse;"> <tr> <td style="text-align: center; border-bottom: 1px solid black;">.557</td> <td style="text-align: center; border-bottom: 1px solid black;">1/24/2025</td> </tr> <tr> <td style="text-align: center; font-size: small;">Pumpage</td> <td style="text-align: center; font-size: small;">Date</td> </tr> </table>	.557	1/24/2025	Pumpage	Date
.557	1/24/2025					
Pumpage	Date					

Name/Title: Chad Doornbos, Superintendent of Public Utilities	
Signature:	Date: 2/4/2026

APPENDIX C



	2019	2020	2021	2022	2023	2024	2025
January	45.749	49.352	45.391	46.970	40.778	45.579	44.725
February	43.495	46.634	45.261	46.051	38.124	43.52	43.77
March	43.365	40.446	48.195	47.147	40.14	41.032	45.4
April	44.600	36.051	49.188	48.566	44.052	47.448	45.222
May	41.634	46.226	69.169	57.810	62.522	54.622	53.191
June	50.173	82.476	82.534	85.884	101.721	79.875	88.969
July	85.308	95.873	85.919	101.275	82.769	78.596	105.407
August	90.872	96.915	87.211	83.557	79.493	80.164	94.491
September	67.249	74.978	91.752	72.15	71.056	85.587	88.147
October	55.191	56.175	57.056	52.772	51.285	57.877	63.634
November	47.945	47.168	48.509	45.003	45.226	43.206	47.999
December	45.737	40.690	43.277	40.859	38.699	37.616	41.203

APPENDIX D

ALLENDALE PUBLIC UTILITIES 2025 Water and Sewer Main Installation Totals

2024 System Total: Watermain = 383,109 ft 72.56 Miles

Sewer Main = 271,795 ft 51.48 Miles

WATERMAIN

Pipe Value per Foot 8" = \$133.00/ft 10" = \$175.00/ft
12" = \$202.00/ft 16" = \$291.00/ft

Project	8"	Value	12"	Value	16"	Value	Project Total	Bill of Sale
Woodford Farm Estates	2,595	\$345,135.00					\$345,135.00	12/15/2025
		\$0.00					\$0.00	
		\$0.00					\$0.00	
		\$0.00					\$0.00	
		\$0.00					\$0.00	
		\$0.00					\$0.00	
Totals:	2,595	\$345,135.00					\$345,135.00	

SEWER MAIN

Pipe Value per Foot 8" = \$128.00/ft 15" = \$193.00/ft
10" = \$138.00/ft 18" = \$234.00/ft
12" = \$165.00/ft 21" = \$291.00/ft

Project	8"	Value	10"	Value	15"	Value	Project Total	Bill of Sale
Woodford Farm Estates	2,472	\$316,416.00					\$316,416.00	12/15/2025
		\$0.00					\$0.00	
		\$0.00					\$0.00	
		\$0.00					\$0.00	
		\$0.00					\$0.00	
		\$0.00					\$0.00	
		\$0.00					\$0.00	
Totals:	2,472	\$316,416.00					\$316,416.00	

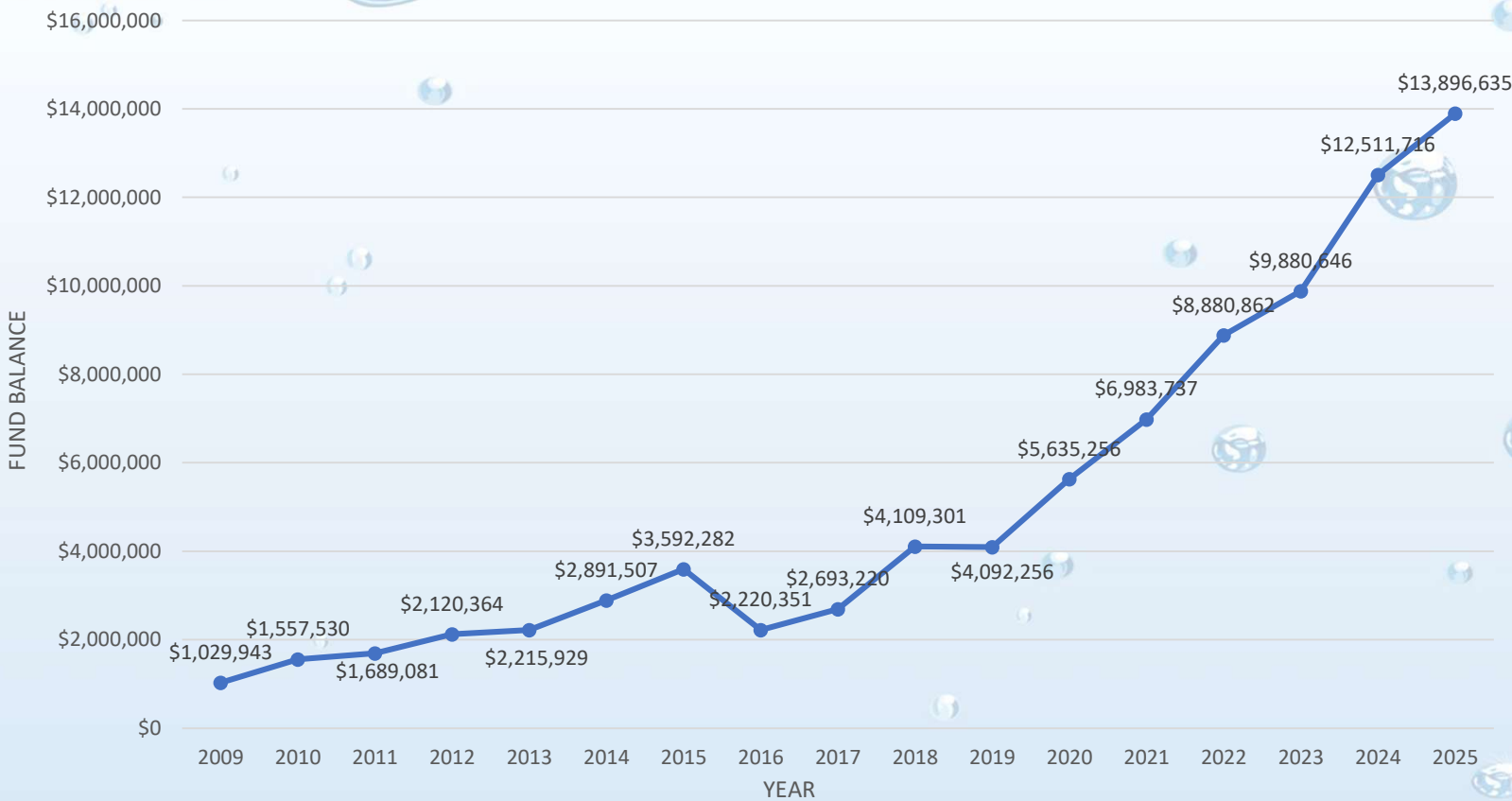
2025 System Total: Watermain = 385,704 ft 73.05 Miles

Sewer Main = 274,267 ft 51.94 Miles

APPENDIX E

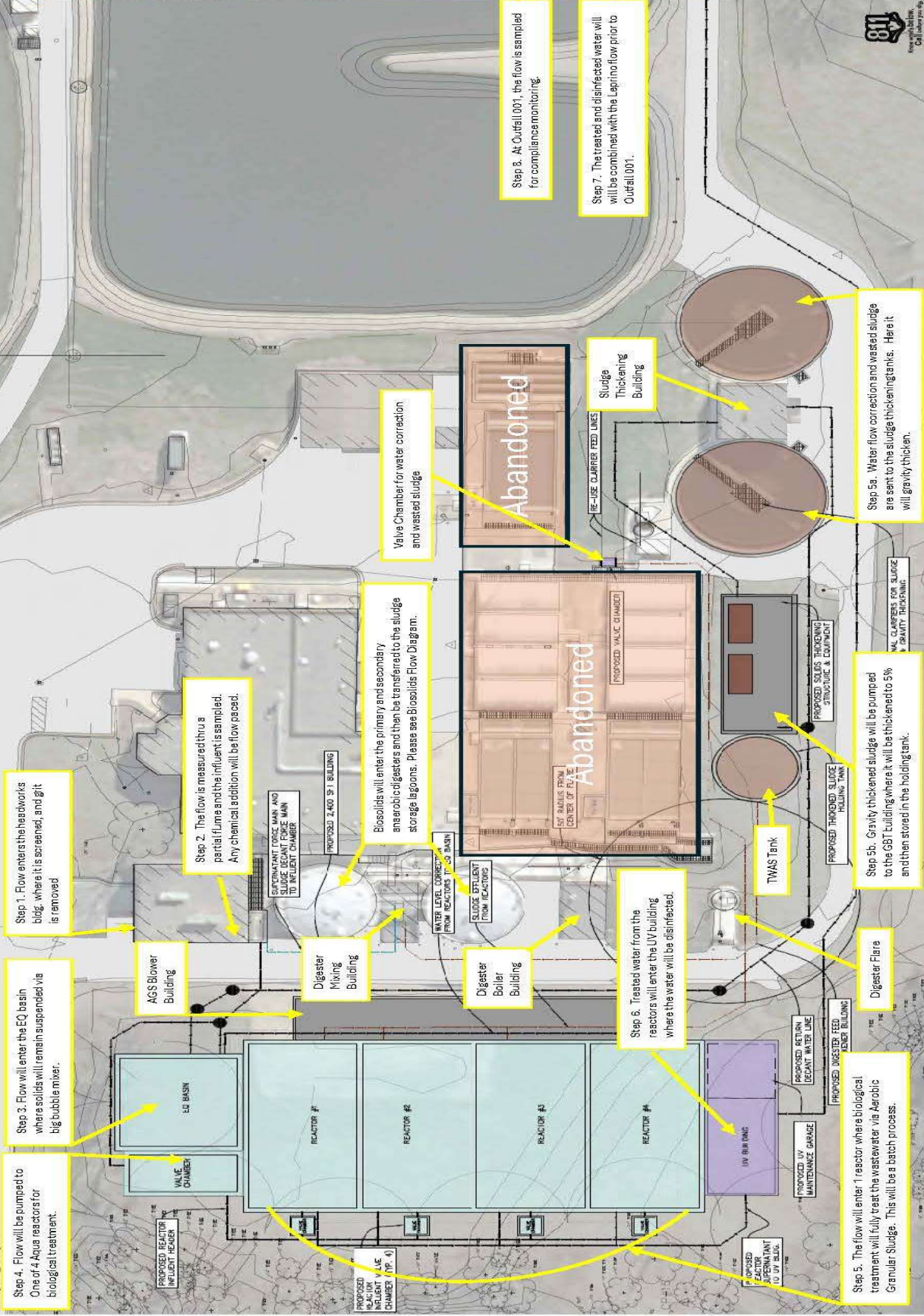
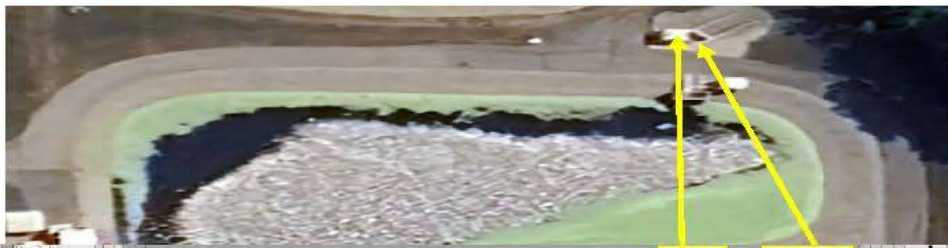
WATER AND SEWER OPERATING CASH BALANCES

YEAR	BALANCE
2009	\$1,029,943
2010	\$1,557,530
2011	\$1,689,081
2012	\$2,120,364
2013	\$2,215,929
2014	\$2,891,507
2015	\$3,592,282
2016	\$2,220,351
2017	\$2,693,220
2018	\$4,109,301
2019	\$4,092,256
2020	\$5,635,256
2021	\$6,983,737
2022	\$8,880,862
2023	\$9,880,646
2024	\$12,511,716
2025	\$13,896,635



APPENDIX G

The Aqua Nereda AGS treatment process is currently under construction





OTTAWA COUNTY SHERIFF'S OFFICE

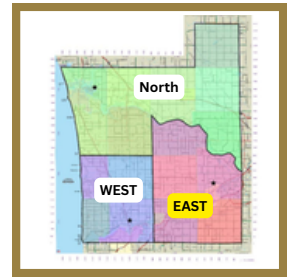
12220 Fillmore St West Olive, MI 49460

Eric J. DeBoer | Sheriff

David Kok | Undersheriff

Allendale Charter Township * Blendon Township * City of Hudsonville * Georgetown Charter Township *
Jamestown Charter Township * Zeeland Charter Township

March 2026



March Around District 4

Overview

During March 2026, the Ottawa County Sheriff's Office responded to a total of 1,977 calls for service within the Eastern District of Ottawa County.

Traffic Activity

- Deputies responded to 202 traffic crashes across the district.
- A total of 831 traffic contacts were made throughout the month.

School Outreach

- School Resource Officers continued to maintain an active presence within their assigned districts.

Training

- The Critical Response Team, Dive Team, and Drone Team completed their monthly training sessions.
- Sheriff's Office personnel completed our March Inservice Training

Respectfully submitted,
Lieutenant Derek Gerencer
Ottawa County Sheriff's Office
Desk: 616-662-6019
Email: dgerencer@miottawa.org



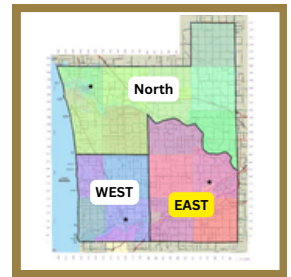
OTTAWA COUNTY SHERIFF'S OFFICE

12220 Fillmore St West Olive, MI 49460

Eric J. DeBoer | Sheriff

David Kok | Undersheriff

March 2026



Allendale Charter Township * Blendon Township * City of Hudsonville * Georgetown Charter Township *
Jamestown Charter Township * Zeeland Charter Township

<u>Georgetown Township</u>	Mar. 26	Feb. 26
Calls	784	760
Enforcement	359	307
Crashes	75	113
Medicals	162	171

<u>City of Hudsonville</u>	Mar. 26	Feb. 26
Calls	208	182
Enforcement	83	123
Crashes	19	22
Medicals	27	19

<u>Zeeland Township</u>	Mar. 26	Feb. 26
Calls	249	199
Enforcement	89	63
Crashes	38	26
Medicals	28	25

<u>Allendale Township</u>	Mar. 26	Feb. 26
Calls	478	410
Enforcement	188	224
Crashes	25	47
Medicals	68	50

<u>Blendon Township</u>	Mar. 26	Feb. 26
Calls	91	78
Enforcement	25	27
Crashes	22	22
Medicals	11	8

<u>Jamestown Township</u>	Mar. 26	Feb. 26
Calls	167	133
Enforcement	87	37
Crashes	23	25
Medicals	20	18

Resolution 2026-08

Water System Rate Schedule

At a regular meeting of the Township Board of the Charter Township of Allendale, Ottawa County, Michigan held at the Township Hall located at 6676 Lake Michigan Drive, Allendale, Ottawa County, Michigan on _____.

Present: _____

Absent: _____

The following resolution was offered by

WHEREAS, the Charter Township of Allendale, Ottawa County, Michigan adopted Code of Ordinances Chapter 452, Article III, as amended.

WHEREAS, the Code requires the Township Board to fix just and reasonable rates and such other charges as may be deemed advisable for supplying services pursuant to the terms of the Code.

THE ALLENDALE CHARTER TOWNSHIP BOARD RESOLVES THAT:

Section 1. SCHEDULE OF RATES AND CHARGES

Effective: April 1, 2026

1. Section 5 connection charges and fees:
 - a. Lateral charge: \$2,731.00
 - b. Water meter fee, regular and sprinkling meters:
 - (i) 3/4" meter - \$ 720.00
 - (ii) 1" meter - \$ 569.00
 - (iii) 1-1/2" meter - \$ 1,981.00
 - (iv) 2" meter - \$ 2,221.00
 - (v) 3" meter - \$ 3021.00

- (vi) 4" meter - \$ 4,391.00
 - (vii) 6" meter - \$8,261.00
 - (viii) 8" meter - \$13,026.00
 - (ix) Sprinkling Meter- Fee based on size of meter used
- c. Connection fee per Meter Size: See Appendix A
- d. Accessibility Charge: An accessibility charge will be applied to all watermain connections that do not require a meter (a fire protection line or fire line with hydrants etc.). The fee for this will be \$4,720.00
- e. Commercial Construction Plan Review Fee: \$1,500.00 This fee is intended to cover the cost of construction plan review, and site inspection fees for water and sewer utilities.
2. Section 6 interest rate – The interest rate shall be Prime plus one percent (1%), however, the interest rate per annum for connections to all portions of the System constructed with the proceeds of the sale of bonds (the "Bonds") sold by or on behalf of the Township shall be the interest rate on the Bonds.
3. Section 7 other charges:
- a. Hydrant use for bulk water supply – commodity rate specified in 4(b)
 - b. Construction project water – commodity rate specified in 4(b)
 - c. Meter test charge - Actual cost plus incidentals
 - d. Shut off notice hand delivered - \$50.00
 - e. Shut off notice mailed - \$25.00
 - f. Service call to turn on water after shut off - \$100.00
 - f. Emergency call - \$100.00
 - g. Skilled Laborer - \$75.00/hr.
 - h. Laborer - \$50.00/hr.
 - i. Construction Inspection Fee - \$85.00/hr

j. Initial cross connection inspection fee which applies to any non-single Residential Domestic meter - \$70.00

4. Section 8 water charges and rates:

a. Quarterly water charge service:

- (i) For a 5/8" meter – See Appendix A
- (ii) For a 3/4" meter – See Appendix A
- (iii) For a 1" meter – See Appendix A
- (iv) For a 1-1/2" meter – See Appendix A
- (v) For a 2" meter – See Appendix A
- (vi) For a 3" meter – See Appendix A
- (vii) For a 4" meter – See Appendix A
- (viii) For a 6" meter – See Appendix A
- (ix) For an 8" meter – See Appendix A

This charge shall be assessed if the Premises is connected to the System for all or any part of a billing quarter. The fact the meter has been temporarily removed shall not excuse a Premises from payment of the customer service charge.

b. Commodity rate – See Appendix A.

5. Section 9 Penalty Charges

a. Late Fee - 10%.

b. Bank Denial Fee – Actual cost incurred

7. Standard Construction Requirements Fee Schedule

a. Development Fee

- (i) Water Main.....\$5.00 per lineal ft

(iv) Sidewalk, shared Use Paths, Pedestrian Bridge..\$4.00 per lineal ft

b. Oversizing Agreement.....\$6.75 per inch of pipe diameter

Section 2. Repeal. All resolutions, orders or parts thereof which are in conflict in whole or in part with any of the provisions of this Resolution are, to the extent of such conflict, hereby repealed.

YEAS:

NAYS:

ABSENT:

Resolution declared adopted on

Jody L. Hansen
Allendale Charter Township Clerk

Adam Elenbaas
Allendale Charter Township Supervisor

CERTIFICATION

The undersigned Clerk of Allendale Charter Township hereby certifies that this Resolution was duly adopted by the Allendale Charter Township Board of Trustees at a meeting held on the _____ pursuant to proper notice and compliance with Act No. 267 of the Public Acts of 1976.

Jody L. Hansen
Allendale Charter Township Clerk

APPENDIX A

Quarterly Charges, Commodity Rate and Connection Fees for 2026

For WATER

Meter Size	Ready to Serve Charge
5/8"	\$29.75
3/4"	\$41.75
1"	\$67.00
1-1/2"	\$137.50
2"	\$186.00
3"	\$295.00
4"	\$452.00
6"	\$577.50
8"	\$718.50

The commodity rate for water will be set at \$3.90/1000 gallons.

Connection Fees

Meter Size	Connection/Tap Fee Water
3/4"	\$2,639
1"	\$2,639
1-1/2"	\$5,278
2"	\$8,445
3"	\$15,834
4"	\$26,390
6"	\$52,780
8"	\$84,448

Resolution 2026- 08

Water System Rate Schedule

At a regular meeting of the Township Board of the Charter Township of Allendale, Ottawa County, Michigan held at the Township Hall located at 6676 Lake Michigan Drive, Allendale, Ottawa County, Michigan on _____.

Present: _____

Absent: _____

The following resolution was offered by

WHEREAS, the Charter Township of Allendale, Ottawa County, Michigan adopted Code of Ordinances Chapter 452, Article III, as amended.

WHEREAS, the Code requires the Township Board to fix just and reasonable rates and such other charges as may be deemed advisable for supplying services pursuant to the terms of the Code.

THE ALLENDALE CHARTER TOWNSHIP BOARD RESOLVES THAT:

Section 1. SCHEDULE OF RATES AND CHARGES

Effective: April 1, 2026

1. Section 5 connection charges and fees:
 - a. Lateral charge:\$2,731.00
 - b. Water meter fee, regular and sprinkling meters:
 - (i) 3/4" meter - \$ 720.00
 - (ii) 1" meter - \$ 569.00
 - (iii) 1-1/2" meter - \$ 1,981.00
 - (iv) 2" meter - \$ 2,221.00
 - (v) 3" meter - \$ 3021.00

- (vi) 4" meter - \$ 4,391.00
- (vii) 6" meter - \$8,261.00
- (viii) 8" meter - \$13,026.00
- (ix) Sprinkling Meter- Fee based on size of meter used

c. Connection fee per Meter Size: See Appendix A

d. Accessibility Charge: An accessibility charge will be applied to all watermain connections that do not require a meter (a fire protection line or fire line with hydrants etc.). The fee for this will be \$4,720.00

e. Commercial Construction Plan Review Fee: \$1,500.00 This fee is intended to cover the cost of construction plan review, and site inspection fees for water and sewer utilities.

2. Section 6 interest rate – The interest rate shall be Prime plus one percent (1%), however, the interest rate per annum for connections to all portions of the System constructed with the proceeds of the sale of bonds (the "Bonds") sold by or on behalf of the Township shall be the interest rate on the Bonds.

3. Section 7 other charges:

- a. Hydrant use for bulk water supply – commodity rate specified in 4(b)
- b. Construction project water – commodity rate specified in 4(b)
- c. Meter test charge - Actual cost plus incidentals
- d. Shut off notice hand delivered - \$50.00
- e. Shut off notice mailed - \$25.00
- f. Service call to turn on water after shut off - \$100.00
- f. Emergency call - \$100.00
- g. Skilled Laborer - \$75.00/hr.
- h. Laborer - \$50.00/hr.
- i. Construction Inspection Fee - \$85.00/hr

j. Initial cross connection inspection fee which applies to any non-single Residential Domestic meter - \$70.00

4. Section 8 water charges and rates:

a. Quarterly water charge service:

- (i) For a 5/8" meter – See Appendix A
- (ii) For a 3/4" meter – See Appendix A
- (iii) For a 1" meter – See Appendix A
- (iv) For a 1-1/2" meter – See Appendix A
- (v) For a 2" meter – See Appendix A
- (vi) For a 3" meter – See Appendix A
- (vii) For a 4" meter – See Appendix A
- (viii) For a 6" meter – See Appendix A
- (ix) For an 8" meter – See Appendix A

This charge shall be assessed if the Premises is connected to the System for all or any part of a billing quarter. The fact the meter has been temporarily removed shall not excuse a Premises from payment of the customer service charge.

b. Commodity rate – See Appendix A.

5. Section 9 Penalty Charges

a. Late Fee - 10%.

b. Bank Denial Fee – Actual cost incurred

7. Standard Construction Requirements Fee Schedule

a. Development Fee

- (i) Water Main.....\$5.00 per lineal ft

(iv) Sidewalk, shared Use Paths, Pedestrian Bridge..\$4.00 per lineal ft

b. Oversizing Agreement.....\$6.75 per inch of pipe diameter

Section 2. Repeal. All resolutions, orders or parts thereof which are in conflict in whole or in part with any of the provisions of this Resolution are, to the extent of such conflict, hereby repealed.

YEAS:

NAYS:

ABSENT:

Resolution declared adopted on

Jody L. Hansen
Allendale Charter Township Clerk

Adam Elenbaas
Allendale Charter Township Supervisor

CERTIFICATION

The undersigned Clerk of Allendale Charter Township hereby certifies that this Resolution was duly adopted by the Allendale Charter Township Board of Trustees at a meeting held on the _____ pursuant to proper notice and compliance with Act No. 267 of the Public Acts of 1976.

Jody L. Hansen
Allendale Charter Township Clerk

APPENDIX A

Quarterly Charges, Commodity Rate and Connection Fees for 2026

For WATER

Meter Size	Ready to Serve Charge
5/8"	\$29.75
3/4"	\$41.75
1"	\$67.00
1-1/2"	\$137.50
2"	\$186.00
3"	\$295.00
4"	\$452.00
6"	\$577.50
8"	\$718.50

The commodity rate for water will be set at \$3.90/1000 gallons.

Connection Fees

Meter Size	Connection/Tap Fee Water
3/4"	\$2,639
1"	\$2,639
1-1/2"	\$5,278
2"	\$8,445
3"	\$15,834
4"	\$26,390
6"	\$52,780
8"	\$84,448

RESOLUTION NO. 2026-09

2026 FEE SCHEDULE

At a regular meeting of the Township Board of the Charter Township of Allendale, Ottawa County, Michigan, held at the Township Hall at 6676 Lake Michigan Drive, Allendale Charter Township, Ottawa County, Michigan, on April 13, 2026, at 6:00 p.m., local time.

PRESENT: _____

ABSENT: _____

After certain matters of business were completed, the Supervisor stated the next order of business was the consideration of a proposed resolution adopting a revised fee schedule. After discussion, the following resolution was offered by _____ and supported by _____:

RESOLUTION

WHEREAS, Article 27 of the Allendale Charter Township Zoning Ordinance (the "Zoning Ordinance") provides that zoning fees shall be established by resolution of the Township Board; and

WHEREAS, Section 5 of the Rental Housing Ordinance restatement, Ordinance No. 2017-4, provides that inspection fees shall be established by resolution of the Township Board; and

WHEREAS, Section 4 of the Cemetery Ordinance, Ordinance No. 1996-2, provides that fees shall be established pursuant to resolution of the Township Board; and

WHEREAS, the Park Rules and Regulations Ordinance, Ordinance No. 2014-8, provides that community park and rental fees shall be established by resolution of the Township Board.

WHEREAS, additional fees charged by the township shall be established by resolution of the Township Board.

NOW, THEREFORE BE IT RESOLVED AS FOLLOWS:

1. That the Allendale Charter Township Board does hereby establish the following fees pursuant to the Allendale Charter Township Ordinances noted above for the respective codes and regulations.

a. Zoning Escrow Fee Policy. The provisions of the Zoning Escrow Fee Policy are incorporated herein with the fees being set forth as follows:

(i) Zoning Escrow

Zoning Board of Appeals	\$ 250.00
Special Use Land Requests	\$ 250.00
Rezoning Requests	\$ 400.00
Planned Special Unit Development Requests	\$ 600.00
Special Meeting Requests	\$ 500.00
Administrative Review	\$ 500.00

(ii) Escrow Account Schedule

Planned Unit Development Projects	\$ 1,500 3,000
Site Plan Reviews	\$ 1,500 3,000
Special Land Uses	\$ 1,500 3,000
Subdivision Plat Reviews	\$ 1,500 3,000
Zoning Ordinance Amendments	\$ 1,500 3,000
Site Condo Reviews	\$ 1,500 3,000
Private Road Approvals	\$ 1,500 3,000
Variance or Zoning Ordinance Interpretation Requests	\$ 250 500
Open Space Developments	\$ 1,500 3,000
Wireless Communication Facility Applications	\$ 1,500 3,000

b. Building Permit Fee Schedule

BE IT FURTHER RESOLVED that the Building Permit Fee Schedule attached hereto as Exhibit A, is hereby adopted. This schedule shall remain in effect until amended or replaced.

c. Rental Registration Schedule

Short Term Rental (By 3/31 Annually)	\$10/unit
Long Term Rental (By 3/31 Annually)	\$10/ unit

1. That a \$10 fee for a certificate of compliance shall be collected per rental unit prior to the issuance of the certificate of compliance.
2. That the following inspection fee schedule shall be implemented:

d. Rental Inspection Fee Schedule

	Single-Family Rental Unit	Two-Family Rental Unit	Multi-Family Rental Unit
Initial Inspection	\$125	\$75	\$75
1 st . Re-inspection	\$0	\$0	\$0
2 nd . Re-inspection	\$50	\$50	\$50
Subsequent Inspection	\$50	\$50	\$50

1. Rental Inspections are to be conducted every four years, while Short Term Rental Inspections are to be conducted annually.
2. That the cost for failing to present for a scheduled inspection or for cancelling the scheduled inspection with less than 24 hours' notice shall be \$40.
3. All fees pursuant to this Resolution shall be collected by the owner of the rental unit, as defined in the Ordinance.

e. Cemetery Fee Schedule

	Resident	Non-resident	Notes:
Grave Site	\$ 500	2000	
Grave Opening/Closing	\$ 700	700	Includes footing
Cremation grave opening/closing	\$ 300	300	Includes footing
Moving of remains from one grave to another within the cemetery	\$ 1,500	1,500	
Dis-internment of remains that are to be moved to another cemetery	\$ 1,500	1,500	
Saturday burials - Additional	\$ 500	50	
Winter burials (Dec. 1 – March 1) - Additional	\$ 200	200	
Transfer of site from resident to resident	\$ 30	30	
Transfer of site from non-resident to non-resident	\$ 30	30	
Transfer of site from resident to non-resident (difference between resident and non-resident grave site)	\$ 1,700	1,700	

Burials can be scheduled from 8:00 AM to 2:00 PM, Monday through Friday, and from 8:00 AM to 11:00 AM on Saturdays, and must be completed within one hour from the scheduled start time. No Sunday or holiday burials.

f. Charges for Fire Department Services

1. Charges for Services:

The following charges shall be due and owing to the Township for any services provided by the Township as set forth in Ordinance No. 2021-02.

(A) The charges for services provided under Allendale Charter Township Ordinance No. 2021-02 shall be the actual cost incurred, which shall include and not be limited to actual wages for personnel and hourly fees for equipment based on the current Allendale Fire Department Equipment Rate fee as set forth in section two (2) of this Resolution.

(B) Charges for services provided under Allendale Charter Township Ordinance shall be the actual cost and wages incurred by the Township or a supporting agency.

(C) The charges for administrative report copies shall be \$1.00 per page.

(D) Rates for false alarms will be as follows:

1. False fire alarm caused by onsite alarm contractor employee, false fire alarm caused by an alarm contractor employee testing or repairing the system where no notification was made to the dispatch center informing they were working on the system: \$100 fee.

2. 1st calendar year false fire alarm. Documented 1st false fire alarm for the calendar year: No fee.

3. 2nd calendar year false fire alarm. Documented 2nd false fire alarm for the calendar year: No fee.

4. 3rd calendar year false fire alarm. Documented 3rd false fire alarm for the calendar year: \$250 fee.

5. 4th calendar year false fire alarm. Documented 4th false fire alarm for the calendar year: \$300 fee.

6. 5th calendar year false fire alarm. Documented 5th false fire alarm for the calendar year: \$350 fee.

(E) Any request for emergency assistance (e.g. emergency medical assistance, public safety, police or sheriff services, or Fire Department services) made for a particular location or commercial entity if that location or commercial entity has requested emergency assistance, of any type, more than five times in a calendar year January 1- December 31 of any year, shall be the actual cost incurred, which shall include and not limited to actual wages for personnel and hourly fees for equipment based on the current Allendale Fire Department Equipment Rate Schedule.

2. Equipment Rate Fee:

The rate for any single piece of equipment, apparatus or apparatus with equipment shall be determined by taking the total cost of the equipment, apparatus or combination of both, when new and multiplying .75 cents per \$1,000.00 in value.

g. Community Park/ Field Rental Fees

Adult Softball Fields	\$ 75.00
Little League Fields	\$ 75.00
Security Deposit (each event)	\$ 200.00

h. Community Park/Pavilion Rental Fees

Pavilion – Resident: 4 hours	\$ 40.00
Pavilion – Non-resident: 4 hours	\$ 50.00
Bandshell – Resident: 4 hours	\$ 40.00
Bandshell – Non-resident: 4 hours	\$ 50.00

i. Township Hall Auditorium Rental Fees

Auditorium – Resident: 4 hours	\$ 80.00
Auditorium – Non-resident: 4 hours	\$ 160.00
Auditorium – Each Additional Hour	\$ 25.00
Security Deposit (each event)	\$ 50.00

j. Library Fee Schedule

BE IT FURTHER RESOLVED that the Library Fee Schedule attached hereto as Exhibit B is hereby adopted. The effective date of the Library Fee Schedule is April 13, 2026; and shall remain in effect until it is amended or replaced.

k. Passport Fee Schedule

Passport Photo Fee - \$14.00 per photo

Passport Agent Processing Fee - As determined by the U.S. Department of State

l. Assessing Fee Schedule

Land Division / Property Line Adjustment (Land Combination)	\$ 50
Each Additional Split/ Combination	\$ 15
Tax Abatements (PA 198)	\$750 \$1,000

m. Insufficient Funds Fee

Actual cost incurred from financial institution will be assessed to the resident.

2. That the above fee schedule shall take effect for all applications submitted after _____ and shall remain in effect until further amended or revoked by resolution of the Township Board.

YES: _____

NO: _____

RESOLUTION DECLARED ADOPTED.

Dated: _____

Jody Hansen, Township Clerk

Exhibit "A"

Building Permit Fee Schedule

Adopted: June 27, 2022

The following fee schedule will be used to calculate the cost of a building permit for all new construction, additions, alterations and repairs. The valuation to be used in computing permit fees will be the total value of all construction for which the permit is being issued, including interior and exterior finish, electrical

systems, plumbing systems, mechanical systems, fire suppression systems and elevators.

<u>Valuation</u>	<u>Fee</u>
\$0.00 to \$1,000	\$40.00
\$1,001 to \$10,000	\$40.00 + \$10.00 for each additional \$1,000.00 and fraction thereof
\$10,001 +	\$130.00 + \$4.00 00 for each additional \$1,000.00 and fraction thereof

Fees shall be based upon the estimated valuation supplied by the permit applicant or by multiplying the square footage of the project by the associated cost data in the most recent International Code Council Rate Table. Determination of which method used to establish an accurate project valuation will be at the

discretion of the Building Official.

Plan Review Fees

Residential projects governed by the Michigan Residential Code and valued at less than \$500,000.00 or less than 3500 square feet of habitable space are exempt from plan review fees. Projects valued greater than \$500,000.00 or greater than 3500 square feet will be charged a plan review fee of 15% of the building permit fee. Commercial and multi-family residential projects will be charged a minimum plan review fee that is the greater of \$100 or .001% of the total construction cost of the project.

Miscellaneous Fees

Manufactured Homes:

In a licensed mobile home park	\$125.00
HUD 3089 Certification fee.....	\$75.00
Outside of a licensed mobile home park.....	Based on value

Demolition Permit Fee:

All structures.....	Based on Value
---------------------	----------------

***Note: Additional fees may be assessed if the building has been determined to be dangerous and unsafe**

Site Plan Review:

Residential Site Plan Review.....	\$75.00
-----------------------------------	---------

Additional Inspections:

Additional Inspection Fee	\$40.00
Inspections not requiring a permit.....	\$75.00

Work Started without a Permit:

Investigation Fee:.....	\$150.00
Stop Work Order:.....	\$250.00

Dangerous and Unsafe Structures:

Investigation Fee:.....	\$150.00
Condemnation:.....	\$250.00
Monitoring Fee (per site visit):.....	\$50.00
Additional Enforcement Action (hourly).....	\$50.00

***Note: Fees to be billed to the property owner if a structure is found to be dangerous and unsafe.**

Exhibit "A"

February 2021 International Code Council-Building Permit Rate Table

Group (2015 International Building Code)	IA	IB	IIA	IIB	IIIA	IIIB	IV	VA	VB
A-1 Assembly, theaters, with stage	233.95	225.89	220.42	211.39	198.92	193.15	204.70	181.63	174.97
A-1 Assembly, theaters, without stage	214.40	206.35	200.88	191.84	179.53	173.76	185.16	162.23	155.58
A-2 Assembly, nightclubs	182.86	177.56	173.06	166.05	156.54	152.22	160.22	141.73	136.94
A-2 Assembly, restaurants, bars, banquet halls	181.86	176.56	171.06	165.05	154.54	151.22	159.22	139.73	135.94
A-3 Assembly, churches	216.47	208.41	202.95	193.91	181.79	176.02	187.23	164.50	157.85
A-3 Assembly, general, community halls, libraries, museums	180.57	172.51	166.04	158.00	144.89	140.11	151.32	127.59	121.94
A-4 Assembly, arenas	213.40	205.35	198.88	190.84	177.53	172.76	184.16	160.23	154.58
B Business	186.69	179.79	173.86	165.19	150.70	145.02	158.70	132.31	126.48
E Educational	197.52	190.73	185.77	177.32	165.32	156.97	171.23	144.39	140.26
F-1 Factory and industrial, moderate hazard	111.86	106.71	100.58	96.68	86.77	82.81	92.61	72.75	68.09
F-2 Factory and industrial, low hazard	110.86	105.71	100.58	95.68	86.77	81.81	91.61	72.75	67.09
H-1 High Hazard, explosives	104.68	99.53	94.40	89.50	80.80	75.84	85.43	66.78	0.00
H234 High Hazard	104.68	99.53	94.40	89.50	80.80	75.84	85.43	66.78	61.12
H-5 HPM	186.69	179.79	173.86	165.19	150.70	145.02	158.70	132.31	126.48
I-1 Institutional, supervised environment	187.63	181.26	176.01	168.60	155.33	151.11	168.69	139.15	134.82
I-2 Institutional, hospitals	314.17	307.27	301.34	292.67	277.18	0.00	286.18	258.79	0.00
I-2 Institutional, nursing homes	217.67	210.77	204.84	196.17	182.68	0.00	189.68	164.29	0.00
I-3 Institutional, restrained	212.42	205.52	199.59	190.92	177.93	171.25	184.43	159.54	151.71
I-4 Institutional, day care facilities	187.63	181.26	176.01	168.60	155.33	151.11	168.69	139.15	134.82
M Mercantile	136.25	130.95	125.45	119.44	109.43	106.11	113.60	94.63	90.83
R-1 Residential, hotels	189.35	182.99	177.74	170.33	156.80	152.58	170.42	140.62	136.29
R-2 Residential, multiple family	158.84	152.48	147.23	139.81	127.05	122.83	139.91	110.87	106.54
R-3 Residential, one- and two-family	148.17	144.14	140.42	136.90	131.89	128.41	134.60	123.40	116.15
R-4 Residential, care/assisted living facilities	187.63	181.26	176.01	168.60	155.33	151.11	168.69	139.15	134.82
S-1 Storage, moderate hazard	103.68	98.53	92.40	88.50	78.80	74.84	84.43	64.78	60.12
S-2 Storage, low hazard	102.68	97.53	92.40	87.50	78.80	73.84	83.43	64.78	59.12
U Utility, miscellaneous	80.38	75.90	71.16	67.61	60.99	57.00	64.60	48.23	45.92

Fines and Fees Schedule

Updated: March 2024



Print Materials

<u>Item</u>	<u>Loan Period</u>	<u>Fine/Day</u>	<u>Maximum Fee</u>	<u>Replacement Cost</u>	<u>Limit/Card</u>	<u>Renew</u>	<u>Reservable</u>
Books	3 weeks	Fine Free	Fine Free	Cost of item	100	Yes	Yes
Book Club in a Bag	42 days	Fine Free	Fine Free	Cost of items	none	Yes	Yes
Lakeland Interloan Book	3 weeks	\$ 0.15	\$ 4.95	Cost of item	100	Yes	Yes
MeL Interloan Book	3 weeks	\$ 0.15	\$ 4.95	\$ 100.00	none	Yes	Yes
Periodicals	1 week	Fine Free	Fine Free	Cost of item	none	Yes	Yes

Media Materials

<u>Item</u>	<u>Loan Period</u>	<u>Fine/Day</u>	<u>Maximum Fee</u>	<u>Replacement Cost</u>	<u>Limit/Card</u>	<u>Renew</u>	<u>Reservable</u>
Audiobooks	3 weeks	\$ 0.15	\$ 4.95	Cost of item	15	Yes	Yes
CD	3 weeks	\$ 0.15	\$ 4.95	Cost of item	15	Yes	Yes
DVD/Blu-Ray	1 week	\$ 0.15	\$ 4.95	Cost of item	15	Yes	Yes
DVD/Blu-Ray (NEW)	1 week	\$ 1.00	\$ 10.00	Cost of item	15	Yes	Yes
Video Game	1 week	\$ 0.15	\$ 4.95	Cost of item	15	Yes	Yes
Video Game (NEW)	1 week	\$ 1.00	\$ 10.00	Cost of item	15	Yes	Yes
Hoopla	Varying	N/A	N/A	N/A	5 per month	No	No
OverDrive/Libby	2 weeks	N/A	N/A	N/A	10	Yes	Yes

Special Collections - May only be checked out on adult library card

<u>Item</u>	<u>Loan Period</u>	<u>Fine/Day</u>	<u>Maximum Fee</u>	<u>Replacement Cost</u>	<u>Limit/Card</u>	<u>Renew</u>	<u>Reservable</u>
All Items	1 week	\$ 1.00	Item Cost	Cost of item	1	No	No

Including but not limited to: game consoles, projector, record player, karaoke player, microscope, Cricut, Wi-Fi Hotspots

Launchpads	1 week	\$ 1.00	Item Cost	Cost of item	1	No	No
------------	--------	---------	-----------	--------------	---	----	----

Kits and Games

<u>Item</u>	<u>Loan Period</u>	<u>Fine/Day</u>	<u>Maximum Fee</u>	<u>Replacement Cost</u>	<u>Limit/Card</u>	<u>Renew</u>	<u>Reservable</u>
Juvenile Kits	Jun-Aug 7 1 week; Sept-May 3 week	\$ 0.15	\$ 4.95	Cost of item	No	No; Yes	No; Yes
Board Games	Jun-Aug 7 1 week; Sept-May 3 week	\$ 0.15	\$ 4.95	Cost of item	No	Yes	Yes

Other Fees

Replacement Card	\$	2.00	
Missing Barcode/Security	\$	1.00	
Processing Fee	Up to \$5.00		
Non-Resident Card	\$	25.00	per year
Fax	\$	1.00	per page

Case Replacements

DVD/Video/CD	\$2.00
Audiobooks	\$5.00

Copy/Print B&W

Letter/Legal Single-Sided	\$	0.15	per page
Letter/Legal Double-Sided	\$	0.20	per page
11x17 Single-Sided	\$	0.50	per page
11x17 Double-Sided	\$	0.75	per page

Copy/Print Color

Letter/Legal Single-Sided	\$	0.25	per page
Letter/Legal Double-Sided	\$	0.30	per page
11x17 Single-Sided	\$	0.75	per page
11x17 Double-Sided	\$	1.00	per page

Approved 10-7-21 at Library Advisory Board

Approved at Township Board 3/25/2024



Alcogare LLC
Secure Scanning Technology

March 3, 2026

Mr. Adam Elenbaas, Supervisor
Mr. Zachary Fields, Planning and Zoning



6676 Lake Michigan Drive, PO Box 539
Allendale, MI 49401

Dear Zachary and Adam,

Thank you for the opportunity to provide this estimate for scanning your records in the Township offices.

Based on our preliminary review in your offices yesterday, we found there are a variety of files and documents, stored in multiple cabinets, shelves and other storage containers. We counted approximately everything and then approximated how much was important to digitize. These numbers are very subjective.

The following counts are very approximate and do not reflect the intention of the Township to examine the contents of each container to determine which records will be digitized and which will be marked for removal when the required retention is exceeded. For purposes of this estimate we are assuming the approximate maximum of records that will be digitized, which will assist the Township on allocating a sufficient budget to accomplish this project.

Scanning all documents will be as follows: Every sheet will be scanned in color and high-resolution (400 dpi). Photos are scanned at 1,200 dpi. Documents can be up to 48 inches wide, and no limit on length. All documents are scanned in PDF or JPG, then converted to PDF. All text-based documents will also have OCR (*Optical Character Recognition*) applied which will make them text-searchable. Project will delivered on 3.2 USB Solid-State Drives. Scanning will be provided in our offices.

File naming will be consistent with current Allendale Charter Township filing methods, as well as being compatible with neighboring communities, software systems such as BSA.net and any Geographic Information System in Ottawa County.



The estimated costs for scanning files and drawings as reviewed are as follows:

Quantity	Item	Description	Unit Price	Discount %	Discount	Total
260,000	Small Docs	Various sizes—legal, specs, permits, sketches, etc.	\$0.10	50%	\$0.05	\$13,000.00
13,800	Large Docs	Drawings, Plans, Maps, Etc	\$1.00	50%	\$0.50	\$6,900.00
2	Hard-Drives	1 TB External 3.0 USB—storage for scans	\$79.99	No Charge	\$0.00	\$0.00
275,400	OCR	Text-Recognition Applied	\$0.02	No Charge	\$0.00	\$0.00
					Subtotal	\$36,350
Estimated Total						\$19,900.00

Bear in mind this is only an estimate. The actual cost will be higher or lower, depending on the total number of scanned documents. I have applied a general average between known (based on a quick glance in several files) and typical quantities to provide an estimate that should be generally sufficient for budgeting purposes.

When we have digitized a representative number of records, we will review quantities and provide the Township with a more accurate estimate of costs if an significant adjustment needs to be made before project is fully commenced. However, based on the records we reviewed yesterday, I feel fairly confident that the quantities quoted above should be sufficient for the project.

Thank you for the opportunity to serve Allendale Charter Township. I look forward to beginning this project very soon.

Sincerely,

Glenn McCaw, President
Alcogare LLC



SUMMARY OF BIDS

March 21, 2026

Chad Doornbos, Superintendent of Public Utilities
Allendale Charter Township
6676 Lake Michigan Drive
Allendale, MI 49401

RE: Pierce St PH II Improvements

Dear Chad:

On February 17, 2026, four bids for the above project were received in the Township Hall. We reviewed the bids, and they appear fair and competitive. A bid tabulation was completed and is attached.

The apparent low bidder is Dean's Landscaping & Excavating, Inc. from Sand Lake, Michigan with a bid amount of \$3,379,157.40.

Please feel free to call with any questions.

Sincerely,

FLEIS & VANDENBRINK

A handwritten signature in blue ink that reads 'Brant Mercer'.

Brant Mercer, P.E.
Project Manager

Enclosure

Allendale Charter Township
Pierce St PH II Improvements
Bid Tabulations

Job: 865272
Date: 2/17/2026

ITEM NO.	ITEM DESCRIPTION	UNIT	ESTIMATED QUANTITY	Engineer's Estimate		Dean's Landscaping & Excavating, Inc.		Kammings & Roodvoets, Inc.		Georgetown Construction		Jackson-Merkey Contractors, Inc.	
				BID UNIT PRICE	BID AMOUNT	BID UNIT PRICE	BID AMOUNT	BID UNIT PRICE	BID AMOUNT	BID UNIT PRICE	BID AMOUNT	BID UNIT PRICE	BID AMOUNT
1	Mobilization, Bonds, & Insurance (5% Max)	LSUM	1	\$136,157.55	\$136,157.55	\$165,200.00	\$165,200.00	\$188,000.00	\$188,000.00	\$185,000.00	\$185,000.00	\$259,000.00	\$259,000.00
2	Pre-Construction Video Survey	LSUM	1	\$10,000.00	\$10,000.00	\$3,500.00	\$3,500.00	\$7,500.00	\$7,500.00	\$5,000.00	\$5,000.00	\$1,975.00	\$1,975.00
3	Traffic Control	LSUM	1	\$35,000.00	\$35,000.00	\$140,300.00	\$140,300.00	\$40,000.00	\$40,000.00	\$100,000.00	\$100,000.00	\$50,000.00	\$50,000.00
4	Erosion Control, Inlet Protection, Fabric Drop	EA	2	\$160.00	\$320.00	\$300.00	\$600.00	\$200.00	\$400.00	\$125.00	\$250.00	\$128.50	\$257.00
5	Erosion Control, Silt Fence	FT	1,150	\$4.00	\$4,600.00	\$3.00	\$3,450.00	\$5.00	\$5,750.00	\$2.50	\$2,875.00	\$3.15	\$3,622.50
6	Maintenance Gravel	TON	150	\$20.00	\$3,000.00	\$50.00	\$7,500.00	\$20.00	\$3,000.00	\$50.00	\$7,500.00	\$40.00	\$6,000.00
7	Clearing & Grubbing	SYD	480	\$20.00	\$9,600.00	\$11.00	\$5,280.00	\$8.00	\$3,840.00	\$3.00	\$1,440.00	\$1.65	\$792.00
8	Tree Removal 19"-36"	EA	4	\$3,000.00	\$12,000.00	\$1,650.00	\$6,600.00	\$1,250.00	\$5,000.00	\$750.00	\$3,000.00	\$1,068.00	\$4,272.00
9	HMA Surface, Removal	SYD	400	\$15.00	\$6,000.00	\$10.00	\$4,000.00	\$13.00	\$5,200.00	\$5.00	\$2,000.00	\$10.50	\$4,200.00
10	Subgrade Undercutting, Type II	CYD	100	\$30.00	\$3,000.00	\$16.00	\$1,600.00	\$20.00	\$2,000.00	\$25.00	\$2,500.00	\$37.50	\$3,750.00
11	Trench Undercutting and Backfill	CYD	100	\$40.00	\$4,000.00	\$35.00	\$3,500.00	\$80.00	\$8,000.00	\$35.00	\$3,500.00	\$39.25	\$3,925.00
12	Dewatering	LSUM	1	\$40,000.00	\$40,000.00	\$748,040.00	\$748,040.00	\$250,000.00	\$250,000.00	\$300,000.00	\$300,000.00	\$1,500,000.00	\$1,500,000.00
13	Exploratory Digging	HOURL	10	\$500.00	\$5,000.00	\$400.00	\$4,000.00	\$500.00	\$5,000.00	\$1,350.00	\$13,500.00	\$540.00	\$5,400.00
14	Hold Utility Pole	EA	2	\$1,000.00	\$2,000.00	\$1,500.00	\$3,000.00	\$1,600.00	\$3,200.00	\$2,500.00	\$5,000.00	\$500.00	\$1,000.00
15	Monument Box Preservation	EA	1	\$1,000.00	\$1,000.00	\$500.00	\$500.00	\$1,500.00	\$1,500.00	\$1,000.00	\$1,000.00	\$650.00	\$650.00
16	Monument Box	EA	1	\$750.00	\$750.00	\$1,500.00	\$1,500.00	\$1,200.00	\$1,200.00	\$500.00	\$500.00	\$550.00	\$550.00
17	Protect Culvert	EA	1	\$500.00	\$500.00	\$800.00	\$800.00	\$1,000.00	\$1,000.00	\$1,000.00	\$1,000.00	\$500.00	\$500.00
18	Sewer/Culvert, 24" or less, Removal	FT	70	\$20.00	\$1,400.00	\$25.00	\$1,750.00	\$20.00	\$1,400.00	\$30.00	\$2,100.00	\$13.10	\$917.00
19	Rem, Salv, Reinstall Culvert	FT	94	\$20.00	\$1,880.00	\$40.00	\$3,760.00	\$90.00	\$8,460.00	100	\$9,400.00	\$56.60	\$5,320.40
20	Culvert, 24"	Ft	50	\$90.00	\$4,500.00	\$109.00	\$5,450.00	\$135.00	\$6,750.00	250	\$12,500.00	\$100.50	\$5,025.00
21	Sewer, CL IV, 15"	Ft	1,106	\$40.00	\$44,240.00	\$85.00	\$94,010.00	\$113.00	\$124,978.00	\$76.00	\$84,056.00	\$72.10	\$79,742.60
22	Sewer, CL IV, 18"	Ft	812	\$100.00	\$81,200.00	\$119.00	\$96,628.00	\$118.00	\$95,816.00	\$83.00	\$67,396.00	\$79.70	\$64,716.40
23	End Section, 15"	EA	1	\$1,500.00	\$1,500.00	\$900.00	\$900.00	\$1,000.00	\$1,000.00	\$987.00	\$987.00	\$1,365.00	\$1,365.00
24	End Section, 18"	EA	1	\$1,600.00	\$1,600.00	\$1,200.00	\$1,200.00	\$1,200.00	\$1,200.00	\$1,150.00	\$1,150.00	\$1,428.00	\$1,428.00
25	Dr Structure Cover, Type B	EA	10	\$750.00	\$7,500.00	\$765.00	\$7,650.00	\$1,350.00	\$13,500.00	\$1,650.00	\$16,500.00	\$1,495.00	\$14,950.00
26	Dr Structure Cover, Type C	EA	6	\$1,000.00	\$6,000.00	\$1,091.00	\$6,546.00	\$1,250.00	\$7,500.00	\$1,850.00	\$11,100.00	\$1,802.00	\$10,812.00
27	Dr Structure Cover, Type KK	EA	6	\$1,000.00	\$6,000.00	\$1,054.00	\$6,324.00	\$1,325.00	\$7,950.00	\$1,850.00	\$11,100.00	\$1,768.00	\$10,608.00
28	Dr Structure Cover, Type G	EA	2	\$700.00	\$1,400.00	\$666.00	\$1,332.00	\$975.00	\$1,950.00	\$1,200.00	\$2,400.00	\$1,404.00	\$2,808.00
29	Dr Structure, 48" DIA	EA	24	\$3,000.00	\$72,000.00	\$2,760.00	\$66,240.00	\$2,450.00	\$58,800.00	\$4,000.00	\$96,000.00	\$3,304.00	\$79,296.00
30	ADS Barracuda Max S4	EA	2	\$16,500.00	\$33,000.00	\$13,000.00	\$26,000.00	\$17,250.00	\$34,500.00	\$12,000.00	\$24,000.00	\$14,010.00	\$28,020.00
31	Riprap, Plain	Ton	15	\$200.00	\$3,000.00	\$150.00	\$2,250.00	\$240.00	\$3,600.00	\$108.00	\$1,620.00	\$250.50	\$3,757.50
32	Dr Structure Cover, Type Q	EA	8	\$860.00	\$6,880.00	\$800.00	\$6,400.00	\$1,425.00	\$11,400.00	\$1,550.00	\$12,400.00	\$1,157.00	\$9,256.00
33	Sanitary Sewer, 8", SDR26	Ft	21	\$250.00	\$5,250.00	\$100.00	\$2,100.00	\$345.00	\$7,245.00	\$519.00	\$10,899.00	\$480.50	\$10,090.50
34	Sanitary Sewer, 24", SDR26	Ft	2,466	\$300.00	\$739,800.00	\$210.00	\$517,860.00	\$375.00	\$924,750.00	\$550.00	\$1,356,300.00	\$450.00	\$1,109,700.00
35	Sanitary Manhole, 48"	Ea	8	\$6,000.00	\$48,000.00	\$5,927.00	\$47,416.00	\$8,000.00	\$64,000.00	\$10,000.00	\$80,000.00	\$16,905.00	\$135,240.00
36	Sanitary Lateral, 6 inch	Ft	510	\$75.00	\$38,250.00	\$115.00	\$58,650.00	\$220.00	\$112,200.00	\$82.00	\$41,820.00	\$358.50	\$182,835.00
37	Property Line Riser, 6 inch	Ea	14	\$250.00	\$3,500.00	\$1,250.00	\$17,500.00	\$900.00	\$12,600.00	\$200.00	\$2,800.00	\$2,987.00	\$41,818.00
38	Sewer Saddle, 24 inch x 6 inch	Ea	14	\$400.00	\$5,600.00	\$1,005.00	\$14,070.00	\$2,500.00	\$35,000.00	\$1,200.00	\$16,800.00	\$2,502.00	\$35,028.00
39	Connect to Existing Sanitary Sewer	Ea	1	\$3,000.00	\$3,000.00	\$800.00	\$800.00	\$4,300.00	\$4,300.00	\$1,500.00	\$1,500.00	\$17,530.00	\$17,530.00
40	Water Main, 12", DI	FT	3,592	\$135.00	\$484,920.00	\$130.50	\$468,756.00	\$200.00	\$718,400.00	\$125.00	\$449,000.00	\$128.50	\$461,572.00
41	Water Main, 8", DI	FT	50	\$125.00	\$6,250.00	\$130.00	\$6,500.00	\$190.00	\$9,500.00	\$75.00	\$3,750.00	\$140.00	\$7,000.00
42	Water Main, 6", DI	FT	102	\$100.00	\$10,200.00	\$85.00	\$8,670.00	\$160.00	\$16,320.00	\$100.00	\$10,200.00	\$121.00	\$12,342.00
43	Connect to Existing Water Main	EA	2	\$3,000.00	\$6,000.00	\$4,910.00	\$9,820.00	\$2,800.00	\$5,600.00	\$8,000.00	\$16,000.00	\$5,498.00	\$10,996.00
44	Valve & Box, 12"	EA	7	\$5,000.00	\$35,000.00	\$4,097.00	\$28,679.00	\$4,600.00	\$32,200.00	\$5,000.00	\$35,000.00	\$4,632.00	\$32,424.00
45	Valve & Box, 6"	EA	8	\$2,000.00	\$16,000.00	\$1,720.00	\$13,760.00	\$2,700.00	\$21,600.00	\$2,000.00	\$16,000.00	\$2,117.00	\$16,936.00
46	Tee, 12" x 12" x 6"	EA	9	\$1,750.00	\$15,750.00	\$1,450.00	\$13,050.00	\$1,650.00	\$14,850.00	\$1,500.00	\$13,500.00	\$2,031.00	\$18,279.00
47	Tee, 12" x 12" x 8"	EA	1	\$1,750.00	\$1,750.00	\$1,520.00	\$1,520.00	\$1,725.00	\$1,725.00	\$1,500.00	\$1,500.00	\$2,095.00	\$2,095.00
48	Cross, 12" x 12"	EA	1	\$2,500.00	\$2,500.00	\$2,525.00	\$2,525.00	\$2,775.00	\$2,775.00	\$5,000.00	\$5,000.00	\$3,505.00	\$3,505.00
49	Bend, 90°, 6"	EA	1	\$750.00	\$750.00	\$510.00	\$510.00	\$800.00	\$800.00	\$500.00	\$500.00	\$702.00	\$702.00
50	Bend, 45°, 12"	EA	2	\$1,100.00	\$2,200.00	\$1,251.00	\$2,502.00	\$1,550.00	\$3,100.00	\$1,800.00	\$3,600.00	\$1,700.00	\$3,400.00
51	Reducer, 12" x 6"	EA	2	\$900.00	\$1,800.00	\$914.00	\$1,828.00	\$1,300.00	\$2,600.00	\$1,500.00	\$3,000.00	\$1,224.00	\$2,448.00
52	Reducer, 8" x 6"	EA	1	\$900.00	\$900.00	\$552.00	\$552.00	\$1,275.00	\$1,275.00	\$750.00	\$750.00	\$725.50	\$725.50
53	Fire Hydrant	EA	10	\$6,000.00	\$60,000.00	\$3,950.00	\$39,500.00	\$4,400.00	\$44,000.00	\$6,500.00	\$65,000.00	\$4,541.00	\$45,410.00
54	Corp. Stop, 1"	EA	18	\$1,250.00	\$22,500.00	\$1,100.00	\$19,800.00	\$1,250.00	\$22,500.00	\$450.00	\$8,100.00	\$1,315.00	\$23,670.00
55	Curb Stop & Box, 1"	EA	18	\$600.00	\$10,800.00	\$1,369.00	\$24,642.00	\$700.00	\$12,600.00	\$800.00	\$14,400.00	\$1,074.00	\$19,332.00
56	Water Service, 1"	FT	555	\$60.00	\$33,300.00	\$50.00	\$27,750.00	\$75.00	\$41,625.00	\$50.00	\$27,750.00	\$46.00	\$25,530.00

ITEM NO.	ITEM DESCRIPTION	UNIT	ESTIMATED QUANTITY	Engineer's Estimate		Dean's Landscaping & Excavating, Inc.		Kamminga & Roodvoets, Inc.		Georgetown Construction		Jackson-Merkey Contractors, Inc.	
				BID UNIT PRICE	BID AMOUNT	BID UNIT PRICE	BID AMOUNT	BID UNIT PRICE	BID AMOUNT	BID UNIT PRICE	BID AMOUNT	BID UNIT PRICE	BID AMOUNT
57	Roadway Grading	Sta	26	\$5,000.00	\$130,000.00	\$9,626.00	\$250,276.00	\$10,000.00	\$260,000.00	\$5,000.00	\$130,000.00	\$11,730.00	\$304,980.00
58	Underdrain, 6"	Ft	5,065	\$8.00	\$40,520.00	\$5.00	\$25,325.00	\$9.00	\$45,585.00	\$8.00	\$40,520.00	\$5.30	\$26,844.50
59	Ditchline Grading	STA	8	\$1,500.00	\$12,000.00	\$2,600.00	\$20,800.00	\$1,100.00	\$8,800.00	\$500.00	\$4,000.00	\$2,210.00	\$17,680.00
60	Subbase, CIP	CYD	4,950	\$25.00	\$123,750.00	\$1.00	\$4,950.00	\$12.00	\$59,400.00	\$25.00	\$123,750.00	\$19.00	\$94,050.00
61	Aggregate Base, 7"	SYD	9,890	\$16.00	\$158,240.00	\$9.90	\$97,911.00	\$14.00	\$138,460.00	\$10.00	\$98,900.00	\$13.50	\$133,515.00
62	Aggregate Base, 6"	SYD	260	\$15.00	\$3,900.00	\$9.00	\$2,340.00	\$12.00	\$3,120.00	\$9.00	\$2,340.00	\$17.80	\$4,628.00
63	Aggregate Surface, 6"	SYD	590	\$15.00	\$8,850.00	\$11.00	\$6,490.00	\$10.00	\$5,900.00	\$12.00	\$7,080.00	\$13.90	\$8,201.00
64	HMA, 4EL	TON	940	\$120.00	\$112,800.00	\$83.50	\$78,490.00	\$83.50	\$78,490.00	\$83.50	\$78,490.00	\$83.50	\$78,490.00
65	HMA, 5EL	TON	908	\$120.00	\$108,960.00	\$85.80	\$77,906.40	\$85.80	\$77,906.40	\$85.80	\$77,906.40	\$85.80	\$77,906.40
66	HMA, Approach	TON	58	\$250.00	\$14,500.00	\$250.00	\$14,500.00	\$260.00	\$15,080.00	\$260.00	\$15,080.00	\$260.00	\$15,080.00
67	HMA, Valley Gutter	FT	5,055	\$2.00	\$10,110.00	\$1.00	\$5,055.00	\$1.00	\$5,055.00	\$1.00	\$5,055.00	\$1.00	\$5,055.00
68	Light Post, Rem, Salv, Reinstall	EA	2	\$75.00	\$150.00	\$500.00	\$1,000.00	\$2,000.00	\$4,000.00	\$250.00	\$500.00	\$300.00	\$600.00
69	Remove, Salvage, Reinstall Mailbox	EA	10	\$150.00	\$1,500.00	\$250.00	\$2,500.00	\$225.00	\$2,250.00	\$75.00	\$750.00	\$177.00	\$1,770.00
70	Buried Utility Marker	EA	2	\$250.00	\$500.00	\$1,000.00	\$2,000.00	\$400.00	\$800.00	\$200.00	\$400.00	\$101.75	\$203.50
71	Pavt Mrkg, Waterborne, 4 inch, Yellow	FT	655	\$1.00	\$655.00	\$1.00	\$655.00	\$0.50	\$327.50	\$0.30	\$196.50	\$2.25	\$1,473.75
72	Pavt Mrkg, Waterborne, 4 inch, Yellow, Second Application	FT	655	\$1.00	\$655.00	\$1.00	\$655.00	\$0.50	\$327.50	\$0.20	\$131.00	\$2.25	\$1,473.75
73	Pavt Mrkg, Polyurea, 24 inch, Stop Bar	FT	29	\$15.00	\$435.00	\$32.00	\$928.00	\$20.00	\$580.00	\$25.00	\$725.00	\$50.00	\$1,450.00
74	Sign, Type III	SFT	30	\$20.00	\$600.00	\$20.00	\$600.00	\$30.00	\$900.00	\$20.00	\$600.00	\$20.00	\$600.00
75	Sign, Type III, Rem, Salv	EA	4	\$60.00	\$240.00	\$50.00	\$200.00	\$80.00	\$320.00	\$50.00	\$200.00	\$50.00	\$200.00
76	Sign, Type III, Erect, Salv	EA	4	\$60.00	\$240.00	\$50.00	\$200.00	\$110.00	\$440.00	\$50.00	\$200.00	\$50.00	\$200.00
77	Post, Steel, 3 lb	FT	84	\$9.00	\$756.00	\$9.00	\$756.00	\$13.00	\$1,092.00	\$9.00	\$756.00	\$9.00	\$756.00
78	White Spruce, 8-10' HT	EA	3	\$800.00	\$2,400.00	\$1,200.00	\$3,600.00	\$1,460.00	\$4,380.00	\$700.00	\$2,100.00	\$842.00	\$2,526.00
79	Surface Restoration	SYD	2,100	\$5.00	\$10,500.00	\$4.50	\$9,450.00	\$16.00	\$33,600.00	\$8.00	\$16,800.00	\$8.90	\$18,690.00
80	Irrigation Repair (Cash Allowance)	DLR	8,000	\$1.00	\$8,000.00	\$1.00	\$8,000.00	\$1.00	\$8,000.00	\$1.00	\$8,000.00	\$1.00	\$8,000.00
81	Private Property Landscape Repair (Cash Allowance)	DLR	10,000	\$1.00	\$10,000.00	\$1.00	\$10,000.00	\$1.00	\$10,000.00	\$1.00	\$10,000.00	\$1.00	\$10,000.00
				Total:	\$2,859,308.55	Total:	\$3,379,157.40	Total:	\$3,771,822.40	Total:	\$3,794,422.90	Total:	\$5,196,896.30